

PRODUCT CATALOGUE

2023. Greek market



We are ready for the future...
Are you?

voltalia

THE COMPANY



Founded in 2005, Votalia is an international player in renewable energy generation and storage, acting both as Power Producer and Service Provider for its Clients.

With a historic purpose to "Improve global environment, fostering local development", Votalia has officially become a "Mission-Driven" company in 2021 to enhance its environmental and social commitments.

It also provides services to independent customers. Votalia operates in 20 countries over 3 continents and is able to act worldwide on behalf of its customers.

Acting as a Distributor on a global scale, since 2008, enabled us to supply more than 1 GW of solar PV technology, making sure that distribution is always accompanied by knowledge and services that add value for/to our customers, in the Residential, Commercial and Industrial sector.

The distribution business line of Votalia is specialized in the distribution of Solar Equipment: modules, inverters, mounting systems, batteries, self-consumption kits and all type of PV accessories and components.

On the distribution, our aim is to provide added value solutions to meet our clients' requirements and contribute to the expansion of their business, building a real partnership with them.

OUR PRESENCE



YOUR PV PARTNER

We are more than a sustainable solutions partner/provider, we also aim to contribute to expand your business, building a strong partnership that will benefit both parties.

- Our team is devoted in finding the best solutions and products to fulfill your PV requirements;
- Our more than 12 years PV expertise and know how guarantee the quality and reliability of the products and solutions we distribute;
- We are flexible, and we supply customized solutions.

WE FOCUS NOT ONLY ON THE PRODUCT, BUT ALSO ON THE SERVICE:

- Personalized Commercial Attention / Local dedicated Sales Force;
- Technical support / Training workshops;
- Logistics and Warehousing: Flexible Logistics provided by large and reliable International and local logistics network;
- After Sales Service;
- Team with local presence;
- We speak your language.

We are ready for the future. Flexibility, excellence in service and continuous technological innovation are our guidelines, conceived to provide installers worldwide with the best offer for all kinds of PV installations.

“When you choose Voltalia as Distributor, you choose a reliable companion that will always be available for you during the whole process to back up the success of your projects”

OUR COMMITMENT

Voltalia Distribution business line commitment is much more than towards quality and service; we are also highly involved in the environmental protection and in the research and development of new photovoltaic solutions to build together with our clients and partners a safer and greener future.

INDEX

05. Modules

- 06. JA Solar
- 10. Risen

18. Inverters

- 19. Huawei
- 25. Goodwe

32. Batteries

- 33. Huawei
- 35. Goodwe
- 37. Energizer

42. E-Mobility

- 43. Huawei
- 45. Goodwe

48. Mounting Systems

- 49. K2 systems

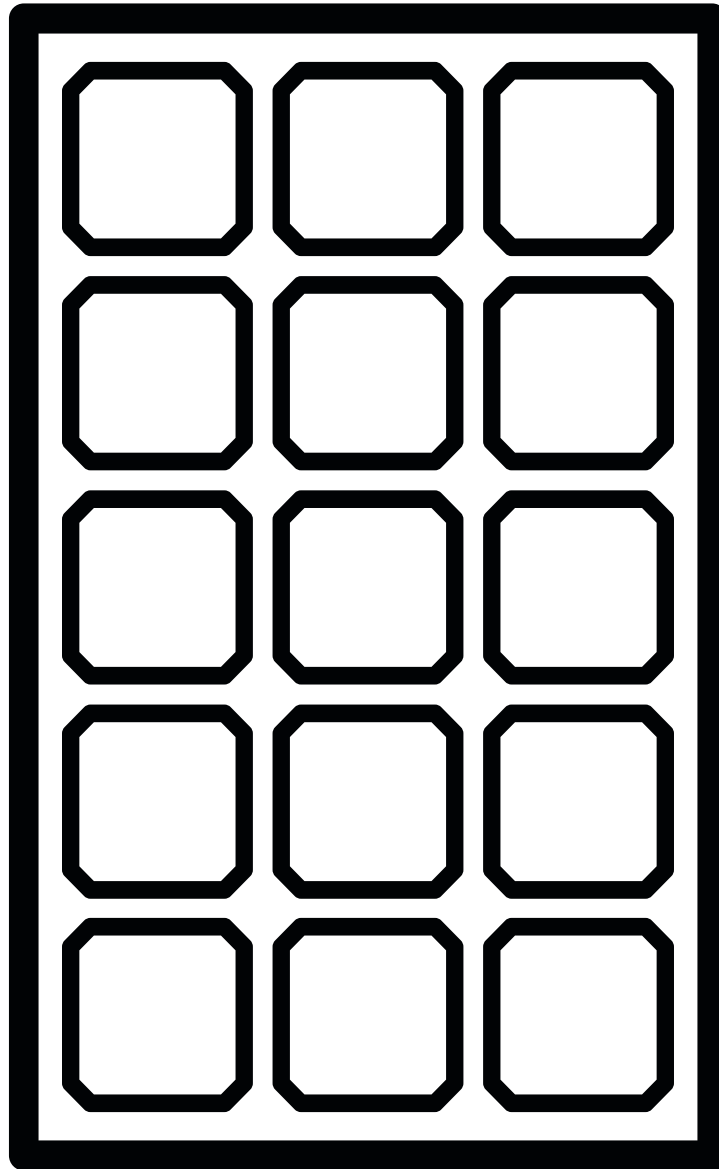
62. Monitoring Systems

- 63. Huawei
- 63. Hoymiles
- 64. Goodwe

66. DIY Kits

- 67. EnergyKit

*all the warranties presented in this catalog are merely indicative and does not exempt you from consulting the manufacturers' warranty certificates.



Solar Modules

Company

Founded in 2005, JA Solar is a manufacturer of high-performance photovoltaic products. With 12 manufacturing bases and more than 20 branches around the world, the company's business covers silicon wafers, cells, modules and photovoltaic power stations. JA Solar products are available in over 120 countries and regions and are used extensively in ground-mounted power plants, commercial & industrial rooftop PV systems and residential rooftop PV systems. With its advantages of continuous technological innovation, sound financial performance, and well-established global sales and service networks, JA Solar has been well received and highly recognized by clients from home and abroad. The company has been listed on Fortune China 500 and Global Top 500 New Energy Enterprises for several consecutive years.

Annual Sales Revenue (2019): ¥21.2 billion

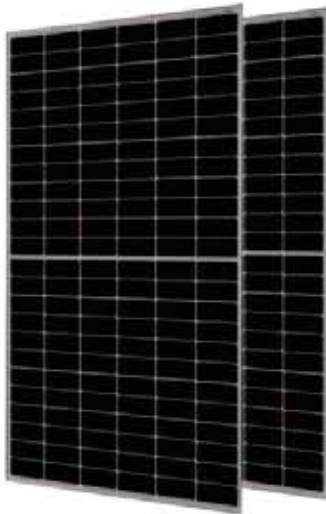
Cumulative Shipments (As of Q4, 2019): 45GW

Clients Worldwide (As of Q4, 2019): 33000

Employees (As of Q4, 2019): 22000



390W MBB Half-Cell Module



365-390/MR

JAM60S20



[+ info](#)

Model	JAM60S20 -365/MR	JAM60S20 -370/MR	JAM60S20 -375/MR	JAM60S20 -380/MR	JAM60S20 -385/MR	JAM60S20 -390/MR
Maximum Efficiency	19.6%	19.9%	20.2%	20.4%	20.7%	21.0%
Weight / Dimensions	18.8kg / 1769 x 1052 x 35 mm					
Tolerance	0~+5W					
Pmax Temperature Coefficient	-0.350%/°C					
Cells	Perc Monocrystalline					
Mechanical Load	5400 Pa (front) / 2400 Pa (back)					
Product Warranty	12-year product warranty 25-year linear power output warranty					

*some models can be supplied with black frame/all black

415W MBB Half-Cell Module



390-415/MR

JAM54S30



[+ info](#)

Model	JAM54S30 -390/MR	JAM54S30 -395/MR	JAM54S30 -400/MR	JAM54S30 -405/MR	JAM54S30 -410/MR	JAM54S30 -415/MR
Maximum Efficiency	20.0%	20.2%	20.5%	20.7%	21.0%	21.3%
Weight / Dimensions	21.5kg / 1722 x 1134 x 30 mm					
Tolerance	0~+5W					
Pmax Temperature Coefficient	-0.350%/°C					
Cells	Perc Monocrystalline					
Mechanical Load	5400 Pa (front) / 2400 Pa (back)					
Product Warranty	12-year product warranty 25-year linear power output warranty					

*some models can be supplied with black frame/all black

470W MBB Half-Cell Module



445-470/MR

JAM72S20



[+ info](#)

Model	JAM72S20 -445/MR	JAM72S20 -450/MR	JAM72S20 -455/MR	JAM72S20 -460/MR	JAM72S20 -465/MR	JAM72S20 -470/MR
Maximum Efficiency	20.0%	20.3%	20.5%	20.7%	20.9%	21.2%
Weight / Dimensions	22.8kg / 2112 x 1052 x 35 mm					
Tolerance	0~+5W					
Pmax Temperature Coefficient	-0.350%/°C					
Cells	Perc Monocrystalline					
Mechanical Load	5400 Pa (front) / 2400 Pa (back)					
Product Warranty	12-year product warranty 25-year linear power output warranty					

*some models can be supplied with black frame/all black

505W MBB Bifacial Mono PERC



480-505/MB

JAM66D30



[+ info](#)

Model	JAM66D30 -480/MB	JAM66D30 -485/MB	JAM66D30 -490/MB	JAM66D30 -495/MB	JAM66D30 -500/MB	JAM66D30 -505/MB
Maximum Efficiency	20.2%	20.4%	20.6%	20.8%	21.0%	21.2%
Weight / Dimensions	29.0kg / 2100 x 1134 x 35 mm					
Tolerance	0~+5W					
Pmax Temperature Coefficient	-0.350%/°C					
Cells	Percium Cells					
Mechanical Load	5400 Pa (front) / 2400 Pa (back)					
Product Warranty	12-year product warranty 30-year linear power output warranty					

*some models can be supplied with black frame/all black

505W MBB Half-Cell Module



480-505/MR

JAM66S30



[+ info](#)

Model	JAM66S30 -480/MB	JAM66S30 -485/MB	JAM66S30 -490/MB	JAM66S30 -495/MB	JAM66S30 -500/MB	JAM66S30 -505/MB
Maximum Efficiency	20.2%	20.4%	20.6%	20.8%	21.1%	21.3%
Weight / Dimensions	26.3kg / 2094 x 1134 x 35 mm					
Tolerance	0~+5W					
Pmax Temperature Coefficient	-0.350%/°C					
Cells	Perc Monocrystalline					
Mechanical Load	5400 Pa (front) / 2400 Pa (back)					
Product Warranty	12-year product warranty 25-year linear power output warranty					

*some models can be supplied with black frame/all black

550W MBB Half-Cell Module



525-550/MR

JAM72S30



[+ info](#)

Model	JAM72S30 -525/MR	JAM72S30 -530/MR	JAM72S30 -535/MR	JAM72S30 -540/MR	JAM72S30 -545/MR	JAM72S30 -550/MR
Maximum Efficiency	20.3%	20.5%	20.7%	20.9%	21.1%	21.3%
Weight / Dimensions	28.6kg / 2279 x 1134 x 35 mm					
Tolerance	0~+5W					
Pmax Temperature Coefficient	-0.350%/°C					
Cells	Perc Monocrystalline					
Mechanical Load	5400 Pa (front) / 2400 Pa (back)					
Product Warranty	12-year product warranty 25-year linear power output warranty					

*some models can be supplied with black frame/all black

550W MBB Bifacial Mono PERC



525-550/MB

JAM72D30

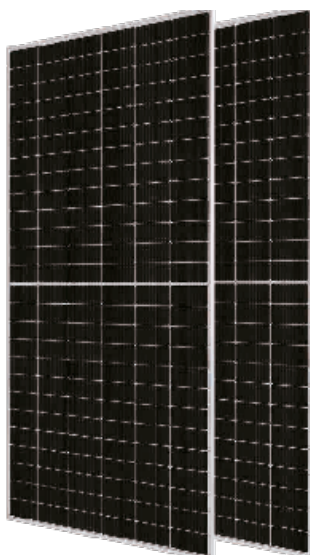


[+ info](#)

Model	JAM72D30 -525/MB	JAM72D30 -530/MB	JAM72D30 -535/MB	JAM72D30 -540/MB	JAM72D30 -545/MB	JAM72D30 -550/MB
Maximum Efficiency	20.3%	20.5%	20.6%	20.8%	21.0%	21.2%
Weight / Dimensions	31.6kg / 2285 x 1134 x 35 mm					
Tolerance	0~+5W					
Pmax Temperature Coefficient	-0.350%/°C					
Cells	Percium Cells					
Mechanical Load	5400 Pa (front) / 2400 Pa (back)					
Product Warranty	12-year product warranty 30-year linear power output warranty					

*some models can be supplied with black frame/all black

605W MBB Half-cell module



580-605/MR

JAM78S30



[+ info](#)

Model	JAM78S30 -580/MR	JAM78S30 -585/MR	JAM78S30 -590/MR	JAM78S30 -595/MR	JAM78S30 -600/MR	JAM78S30 -605/MR
Maximum Efficiency	20.7%	20.9%	21.1%	21.3%	21.5%	21.6%
Weight / Dimensions	31.1kg / 2467 x 1136 x 36 mm					
Tolerance	0~+5W					
Pmax Temperature Coefficient	-0.350%/°C					
Cells	Mono					
Mechanical Load	5400 Pa (112lb/ft ²) / 2400 Pa (50lb/ft ²)					
Product Warranty	12-year product warranty 30-year linear power output warranty					

*some models can be supplied with black frame/all black



JASolar Warranty

[+ info](#)



+ video

RISEN ENERGY CO., LTD

Risen Energy Co., Ltd. was founded in 1986 and listed as a Chinese public company (Stock Code: 300118) in 2010. Risen Energy is one of the pioneers in solar industry and has committed to this industry as a R&D expert, an integrated manufacturer from wafers to modules, a manufacturer of off-grid systems, and also an investor, a developer and an EPC of PV projects. Aiming to deliver the green energy worldwide, Risen Energy is developing internationally with offices and sales networks in China, Germany, Australia, Mexico, India, Japan, USA and others.

Exported to the world

As a state-level high-tech enterprise, Risen Energy has more than 45 key business core technologies, and has established a national level photovoltaic laboratory, which is independent and received CNAS certification. The laboratory can carry out 54 project tests according to EC61215, IEC61730-2 and UL1703, and provide support for the design, development and quality control of the company and other photovoltaic enterprises.



RSM40-8-390M-410M



390M-410M

RSM40-8



+ info

Model	RSM40-8-390M	RSM40-8-395M	RSM40-8-400M	RSM40-8-405M	RSM40-8-410M
Maximum Efficiency	20.3%	20.5%	20.8%	21.1%	21.3%
Weight / Dimensions	21.0kg / 1754 x 1096 x 30 mm				
Pmax Temperature Coefficient	-0.34%/°C				
Cells	Perc Monocrystalline				
Mechanical Load	wind load 2400Pa & snow load 5400Pa				
Product Warranty	12-year product warranty 25-year linear power warranty				

*some models can be supplied with black frame/all black

RSM144-7-435M-455M



435M-455M

RSM144-7

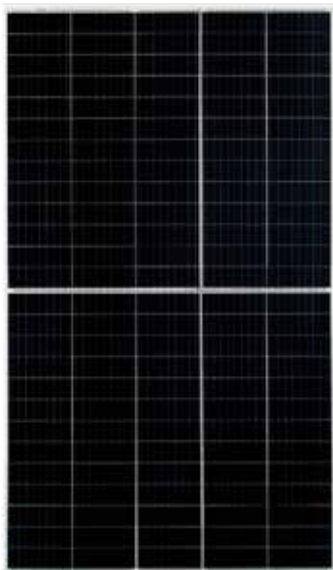


+ info

Model	RSM144-7-435M	RSM144-7-440M	RSM144-7-445M	RSM144-7-450M	RSM144-7-455M
Maximum Efficiency	19.7%	19.9%	20.1%	20.4%	20.6%
Weight / Dimensions	24.5kg / 2108 x 1048 x 35 mm				
Pmax Temperature Coefficient	-0.37%/°C				
Cells	Perc Monocrystalline				
Mechanical Load	2400Pa & snow load 5400Pa resistance				
Product Warranty	12-year product warranty 25-year linear power warranty				

*some models can be supplied with black frame/all black

RSM130-8-430-450M



430M-450M

RSM130-8



[+ info](#)

Model	RSM130-8-430M	RSM130-8-435M	RSM130-8-440M	RSM130-8-445M	RSM130-8-450M
Maximum Efficiency	20.7%	21.0%	21.2%	21.4%	21.7%
Weight / Dimensions	22.5kg / 1894 x 1096 x 30 mm				
Tolerance	0~+3%				
Pmax Temperature Coefficient	-0.34%/°C				
Cells	Perc Monocrystalline				
Mechanical Load	wind load 2400Pa & snow load 5400Pa				
Product Warranty	12-year product warranty 25-year linear power warranty				

*some models can be supplied with black frame/all black

RSM110-8-530-550BMDG



530-550BMDG

RSM110-8

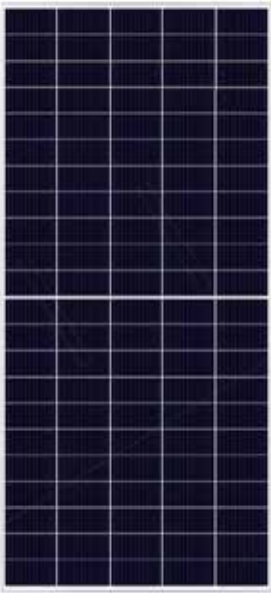


[+ info](#)

Model	RSM110-8-530BMDG	RSM110-8-535BMDG	RSM110-8-540BMDG	RSM110-8-545BMDG	RSM110-8-550BMDG
Maximum Efficiency	20.3%	20.5%	20.7%	20.9%	21.0%
Weight / Dimensions	33±0.5kg / 2384×1096×30mm				
Tolerance	0~+3%				
Pmax Temperature Coefficient	-0.34%/°C				
Cells	Perc Monocrystalline				
Mechanical Load	wind load 2400Pa & snow load 5400Pa				
Product Warranty	12-year product warranty 25-year linear power warranty				

*some models can be supplied with black frame/all black

RSM110-8-535M-555M



535M-555M

RSM110-8



[+ info](#)

Model	RSM110-8-535M	RSM110-8-540M	RSM110-8-545M	RSM110-8-550M	RSM110-8-555M
Maximum Efficiency	20.5%	20.7%	20.9%	21.0%	21.2%
Weight / Dimensions	29.0kg / 2384 x 1096 x 35 mm				
Tolerance	0~+5W				
Pmax Temperature Coefficient	-0.37%/°C				
Cells	Perc Monocrystalline				
Mechanical Load	5400 Pa (front) / 2400 Pa (back)				
Product Warranty	12-year product warranty 25-year linear power warranty				

*some models can be supplied with black frame/all black

RSM144-10-570BNDG-595BNDG



570-595W

RSM144-10

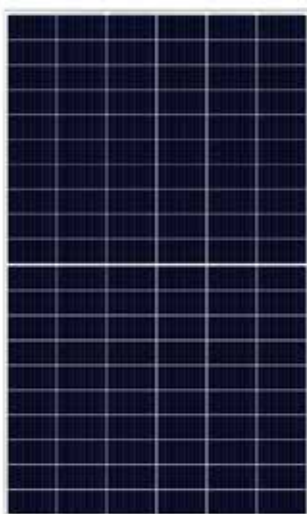


[+ info](#)

Model	RSM144-10-570BNDG	RSM144-10-575BNDG	RSM144-10-580BNDG	RSM144-10-585BNDG	RSM144-10-590BNDG	RSM144-10-595BNDG
Maximum Efficiency	21.1%	21.3%	21.5%	21.6%	21.8%	22.0%
Weight / Dimensions	33.5kg / 2384 x 1134 x 30mm					
Tolerance	0~+3%					
Pmax Temperature Coefficient	-0.32%/°C					
Cells	Perc Monocrystalline					
Mechanical Load	wind load 2400Pa & snow load 5400Pa					
Product Warranty	12-year product warranty 25-year linear power warranty					

*some models can be supplied with black frame/all black

RSM120-8-580M-600M



580M-600M

RSM120-8

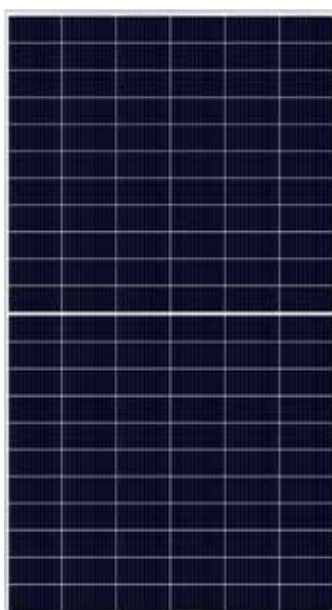


[+ info](#)

Model	RSM120-8-580M	RSM120-8-585M	RSM120-8-590M	RSM120-8-595M	RSM120-8-600M
Maximum Efficiency	20.5%	20.7%	20.8%	21.0%	21.2%
Weight / Dimensions	31.5±0.5kg / 2172 x 1303 x 35 mm				
Pmax Temperature Coefficient	-0.37%/°C				
Cells	Perc Monocrystalline				
Mechanical Load	wind load 2400Pa & snow load 5400Pa				
Product Warranty	12-year product warranty 25-year linear power warranty				

*some models can be supplied with black frame/all black

RSM132-8-640M-660M



640M-660M

RSM132-8

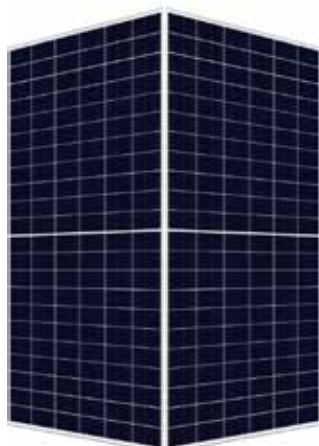


[+ info](#)

Model	RSM132-8-640M	RSM132-8-645M	RSM132-8-650M	RSM132-8-655M	RSM132-8-660M
Maximum Efficiency	20.6%	20.8%	20.9%	21.1%	21.2%
Weight / Dimensions	34.0kg / 2384 x 1303 x 35 mm				
Pmax Temperature Coefficient	-0.34%/°C				
Cells	Perc Monocrystalline				
Mechanical Load	wind load 2400Pa & snow load 5400Pa				
Product Warranty	12-year product warranty 25-year linear power warranty				

*some models can be supplied with black frame/all black

RSM132-8-640BMDG-665BMDG



640BMDG-665BMDG

RSM132-8



[+ info](#)

Model	RSM132-8-640BMDG	RSM132-8-645BMDG	RSM132-8-650BMDG	RSM132-8-655BMDG	RSM132-8-660BMDG	RSM132-8-665BMDG
Maximum Efficiency	20.6%	20.8%	20.9%	21.1%	21.2%	21.4%
Weight / Dimensions	40.0kg / 2384 x 1303 x 35 mm					
Pmax Temperature Coefficient	-0.34%/°C					
Cells	Perc Monocrystalline					
Mechanical Load	wind load 2400Pa & snow load 5400Pa					
Product Warranty	12-year product warranty 30-year linear power warranty					

*some models can be supplied with black frame/all black

RSM132-8-645-670M



645-670M

RSM132-8

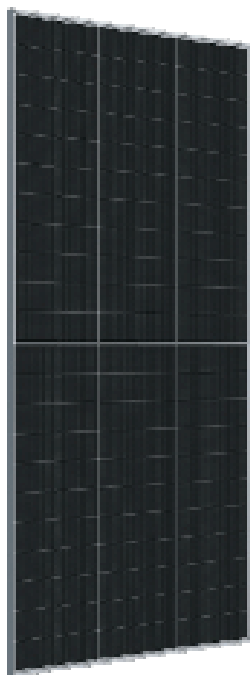


[+ info](#)

Model	RSM132-8-645M	RSM132-8-650M	RSM132-8-655M	RSM132-8-660M	RSM132-8-665M	RSM132-8-670M
Maximum Efficiency	20.8%	20.9%	21.1%	21.2%	21.4%	21.6%
Weight / Dimensions	34.0kg / 2384 x 1303 x 35 mm					
Tolerance	0~+3%					
Pmax Temperature Coefficient	-0.34%/°C					
Cells	Perc Monocrystalline					
Mechanical Load	wind load 2400Pa & snow load 5400Pa					
Product Warranty	12-year product warranty 25-year linear power warranty					

*some models can be supplied with black frame/all black

RSM132-8-665-690BNDG



665-690W

RSM132-8

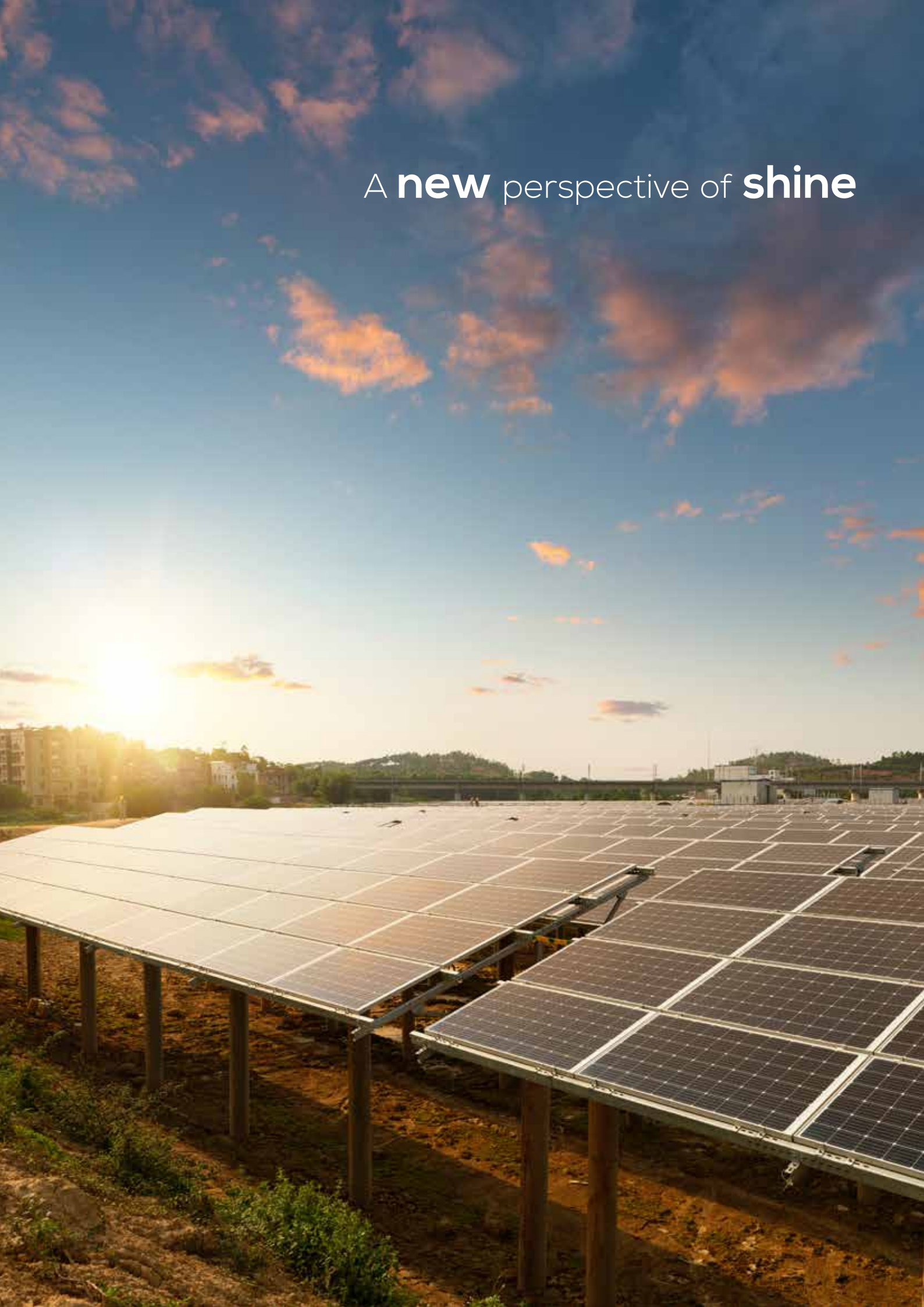


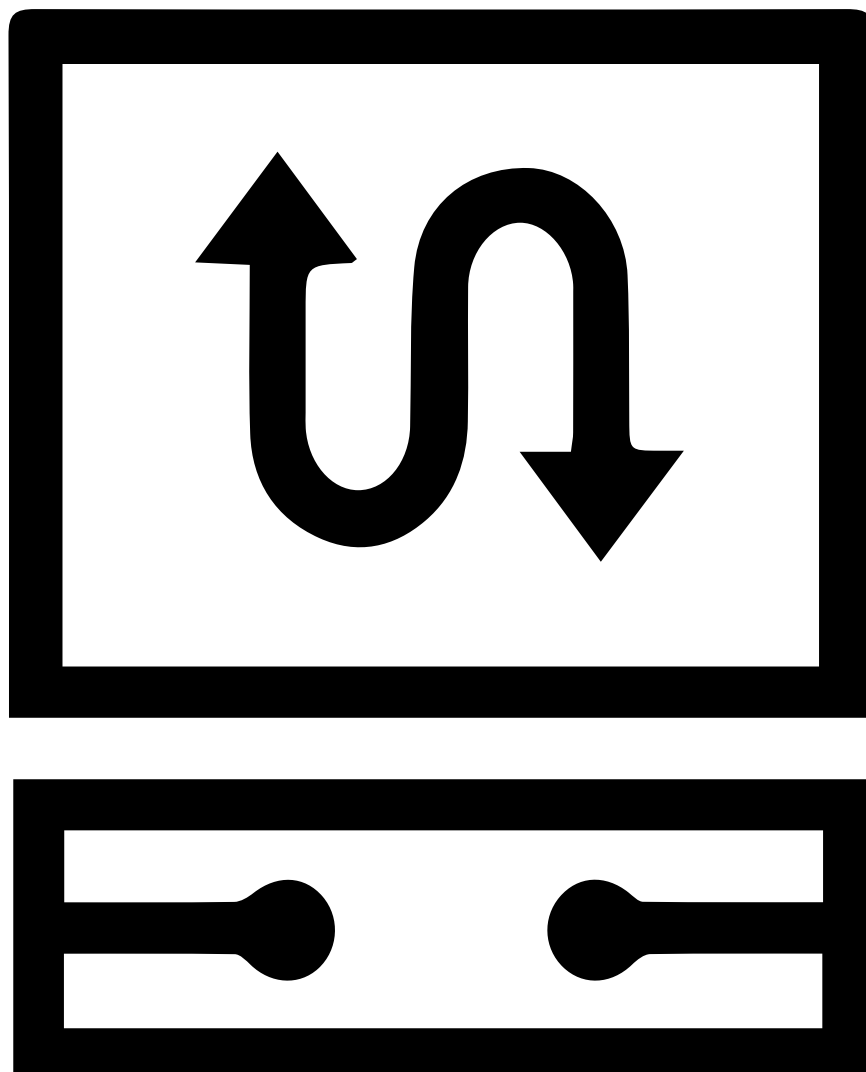
[+ info](#)

Model	RSM132-8-665BNDG	RSM132-8-670BNDG	RSM132-8-675BNDG	RSM132-8-680BNDG	RSM132-8-685BNDG	RSM132-8-690BNDG
Maximum Efficiency	21.4%	21.6%	21.7%	21.9%	22.1%	22.2%
Weight / Dimensions	38.5kg / 2384×1303×35mm					
Tolerance	0~+3%					
Pmax Temperature Coefficient	-0.32%/°C					
Cells	Perc Monocrystalline					
Mechanical Load	wind load 2400Pa & snow load 5400Pa					
Product Warranty	12-year product warranty 30-year linear power warranty					

*some models can be supplied with black frame/all black

A **new** perspective of **shine**





Inverters

Company

Huawei, a leading global ICT and network energy solutions provider, serves more than one-third of the world's population. We have nearly 188,000 employees, and we operate in more than 170 countries and regions, serving more than three billion people around the world. With over CNY480 billion invested into R&D over the past decade, Huawei continues to innovate based on customer needs and are committed to enhancing customer experience and delivering maximum value.

FusionSolar

With an established presence in solar markets worldwide, Huawei provides new generation string inverters with smart management technology to create a fully digitalized Smart PV Solution – FusionSolar®. FusionSolar® is smart, safe and reliable whilst consistently delivering high yields and ROI, making Huawei the preferred choice for investors and developers worldwide. Huawei has been ranked as No.1 in the world for global inverter shipments from 2015 to 2018.



Smart PV Optimizer

SUN2000-450W



One-Fits-All Optimizer
Easier Business



<1.5 min Pairing with Inverter



<5s Module Auto-Mapping



Arc Fault Pinpoint Position

[+ info](#)

Model	SUN2000-450W-P
Rated input power	450 W
Maximum Efficiency	99.5 %
Protection	IP68

Smart PV Optimizer

SUN2000-600W



NEW



One-Fits-All Optimizer
Easier Business



<1.5 min Pairing with Inverter



<5s Module Auto-Mapping



Arc Fault Pinpoint Position

[+ info](#)

Model	SUN2000-600W-P
Rated input power	600 W
Maximum Efficiency	99.5 %
Protection	IP68

Smart Energy Center

SUN2000-2/3/3.68/4/4.6/5/6KTL-L1



Active Safety



Higher Yields



2x POWER Battery Ready

[+ info](#)

Model	Maximum Power	Maximum Efficiency	Nominal Power	MPPT	Protection
SUN2000L-2KTL-L1	2200 VA	98.2%	2000 W	2	IP65
SUN2000L-3KTL-L1	3300 VA	98.3 %	3000 W		
SUN2000L-3.68KTL-L1	3680 VA	98.4 %	3680 W		
SUN2000L-4KTL-L1	4400 VA	98.4 %	4000 W		
SUN2000L-4.6KTL-L1	5000 VA	98.4 %	4600 W		
SUN2000L-5KTL-L1	5500 VA	98.4 %	5000 W		
SUN2000L-6KTL-L1	6000 VA	98.4 %	6000 W		

Smart Energy Center

SUN2000-3/4/5/6/8/10KTL-M1



Active Safety



Higher Yields



Flexible Communication

[+ info](#)

Model	Maximum Power	Maximum Efficiency	Nominal Power	MPPT	Protection
SUN2000-3KTL-M1	3300 VA	98.2%	3000 W	2	IP65
SUN2000-4KTL-M1	4400 VA	98.3%	4000 W		
SUN2000-5KTL-M1	5500 VA	98.4%	5000 W		
SUN2000-6KTL-M1	6600 VA	98.6%	6000 W		
SUN2000-8KTL-M1	8800 VA	98.6%	8000 W		
SUN2000-10KTL-M1	11000 VA	98.6%	10000 W		

Smart String Inverter

SUN2000-12/15/17/20KTL-M2



Active Safety



Higher Yields



Flexible Communication

[+ info](#)

Model	Maximum Power	Maximum Efficiency	Nominal Power	MPPT	Protection
SUN2000-12KTL-M2	13200 VA	98.50%	12000 W	2	IP65
SUN2000-15KTL-M2	16500 VA	98.65%	15000 W		
SUN2000-17KTL-M2	18700 VA	98.65%	17000 W		
SUN2000-20KTL-M2	22000 VA	98.65%	20000 W		

Smart String Inverter

SUN2000-30/36/40KTL-M3



Smart



Efficient



Safe



Reliable

[+ info](#)

Model	Maximum Power	Maximum Efficiency	Nominal Power	MPPT	Protection
SUN2000-30KTL-M3	33000 VA	98.7%	30000 W	4	IP66
SUN2000-36KTL-M3	40000 VA		36000 W		
SUN2000-40KTL-M3	44000 VA		40000 W		

Smart String Inverter

SUN2000-50KTL-M3

NEW



Active Safety



Higher Yields



Flexible Communication

[+ info](#)

Model	Maximum Power	Maximum Efficiency	Nominal Power	MPPT	Protection	AC Voltage	DC Voltage
SUN2000-50KTL-M3	55,000 VA	98.7%	50,000W	4	IP66	400V	1,100V

Smart String Inverter

SUN2000-100KTL-M2

COMING SOON



10 MPP Trackers



98.8% (@480V) Max. Efficiency



String-level Management



Smart I-V Curve Diagnosis Supported



MBUS Supported



Fuse Free Design



Surge Arresters for DC & AC



IP66 Protection

[+ info](#)

Model	Maximum Power	Maximum Efficiency	Nominal Power	MPPT	Protection	AC Voltage	DC Voltage
SUN2000-100KTL-M2	110,000 VA	98.6% @ 400 V, 98.8% @ 480 V	100,000 W	10	IP66	400 V	1,100V

Smart String Inverter

SUN2000-115KTL-M2

COMING SOON



10 MPP Trackers



98.8% (@480V) Max. Efficiency



String-level Management



Smart I-V Curve Diagnosis Supported



MBUS Supported



Fuse Free Design



Surge Arresters for DC & AC



IP66 Protection

[+ info](#)

Model	Maximum Power	Maximum Efficiency	Nominal Power	MPPT	Protection	AC Voltage	DC Voltage
SUN2000-115KTL-M2	125,000 VA	98.6% @400 V, 98.8% @480 V	115,000 W	10	IP66	400 V	1,100V

String Inverter

SUN2000-330KTL-H1

COMING SOON



[+ info](#)

Model	Maximum Power	Maximum Efficiency	Nominal Power	MPPT	Protection
SUN2000-300KTL-H1	33000 VA	≥99.0%	300,000 W	6	IP66

Company

Established in 2010, GoodWe is a world-leading PV inverter and energy storage solutions provider, with the research and manufacturing of PV inverters and energy storage solutions at its core.

GoodWe is listed as a public limited company on the Shanghai Stock Exchange (Stock Code: 688390), with a long-standing strong presence in the solar market. GoodWe PV inverters have seen an accumulative installation of 35 GW in more than 100 countries in residential and commercial rooftops, industrial and utility scale systems and range from 0.7kW to 250kW. GoodWe has more than 4,000 employees situated in over 20 different countries and is regarded as the Global Top 3 storage inverter supplier by Wood Mackenzie in 2021.

GoodWe's financial stability has landed it the highest Altman-Z score among PV manufacturers on BloombergNEF's 2021 report, displaying its strong financial health and bankability, and until today is the sole inverter brand that has won the TÜV Rheinland All Quality Award for 7 consecutive years (2015-2021). In 2022 GoodWe was awarded the Silver Medal by EcoVadis, placing the company in the top 14% of 100,000+ companies across 175 countries: a firm statement of the company's commitment to a sustainable, smart energy future.

DRIVING THE WORLD'S SMART ENERGY FUTURE

In numbers:

- 4.000+ employees.
- 700+ employees working in R&D.
- 35 GW installed globally.



XS Series

Single-MPPT, Single-Phase



- ⊙ A4 size
- ⊙ Light weight
- ⊙ 30% DC oversizing
- ⊙ 97% European Efficiency
- ⊙ LAN/WIFI communication

[+ info](#)

Model	Maximum Power	Maximum Efficiency	Nominal Power	MPPT	Protection
GW700-XS	910	97.2%	700	1	IP65
GW1000-XS	1300	97.2%	1000		
GW1500-XS	1950	97.3%	1500		
GW2000-XS	2600	97.5%	2000		
GW2500-XS	3250	97.4%	2500		
GW3000-XS	3900	97.4%	3000		

DNS Series

Dual-MPPT, Single-Phase



- ⊙ Lowest startup voltage at 120V
- ⊙ Wide range of MPPT voltage
- ⊙ Small, lightweight and easy to install
- ⊙ Built-in anti-reserve function
- ⊙ IP65 dustproof and waterproof
- ⊙ Fanless and noiseless

[+ info](#)

Model	Maximum Power	Maximum Efficiency	Nominal Power	MPPT	Protection
GW3000D-NS	3900	97.8%	3000	2	IP65
GW3600D-NS	4680	97.8%	3600		
GW4200D-NS	5460	97.8%	4200		
GW5000D-NS	6500	97.8%	5000		
GW6000D-NS	7200	97.8%	6000		

SDT G2 Series

Dual-MPPT, Three-Phase



- ⊙ 50% DC Input Oversizing
- ⊙ 10% AC Output Overloading
- ⊙ Built-in Anti-reverse current
- ⊙ Arc-Fault circuit interrupter

[+ info](#)

Model	Maximum Power	Maximum Efficiency	Nominal Power	MPPT	Protection
GW4K-DT	6000	98.2%	4000	2	IP65
GW5K-DT	7500	98.2%	5000		
GW6K-DT	9000	98.2%	6000		
GW8K-DT	12000	98.2%	8000		
GW10KT-DT	15000	98.3%	10000		
GW12KT-DT	18000	98.3%	12000		
GW15KT-DT	22500	98.3%	15000		

SDT G2 Series

Dual-MPPT, Three-Phase



- ⊙ 50% DC Input Oversizing
- ⊙ 10% AC Output Overloading
- ⊙ Built-in Anti-reverse current
- ⊙ Arc-Fault circuit interrupter

[+ info](#)

Model	Maximum Power	Maximum Efficiency	Nominal Power	MPPT	Protection
GW17KT-DT	25500	98.4%	17000	2	IP65
GW20KT-DT	30000	98.4%	20000		
GW25KT-DT	37500	98.4%	25000		

SDT G2 PLUS+ Series

Dual-MPPT, Three-Phase



- ⊙ Smart Shadow Scan with adjustable scan interval
- ⊙ Multi-protocol compatibility for smart home integration
- ⊙ Optional AFCI and Optional exchangeable DC Type II SPD & SPD failure alarm
- ⊙ Up to 200% DC input oversizing & 110% AC output overloading
- ⊙ Up to 16 A max. DC input current per stringCompatible with high-power 182mm/210mm modules
- ⊙ Fanless design for quiet operations
- ⊙ Elegant and compact design

[+ info](#)

Model	Max. AC Active Power (W)	Maximum Efficiency	Nominal Output Power (W)	MPPT	Protection
GW4000-SDT-20	4400	98.2%	4000	2	IP65
GW5000-SDT-20	5500	98.2%	5000		
GW6000-SDT-20	6600	98.2%	6000		
GW8000-SDT-20	8800	98.3%	8000		
GW10KSDT-20	11000	98.3%	10000		
GW12KSDT-20	13200	98.4%	12000		
GW12KLVSDT-20	12000	96.9%	12000		
GW15KSDT-20	16500	98.4%	15000		
GW17KSDT-20	18700	98.4%	17000		
GW20KSDT-20	22000	98.4%	20000		

SMT Series

Three-MPPT, Three-Phase



- ⊙ Compact and lightweight
- ⊙ 30% DC input oversizing
- ⊙ Up to 10% AC output overloading
- ⊙ Wide MPPT range from 200 V to 950 V
- ⊙ IP65 dustproof and waterproof

[+ info](#)

Model	Maximum Power	Maximum Efficiency	Nominal Power	MPPT	Protection
GW25K-MT	32500	98.7%	25000	3	IP65
GW30K-MT	39000	98.8%	30000		
GW36K-MT	42900	98.8%	36000		

SMT Series

Up to 6 MPPTs, Three Phase



- ⊙ Smart Control & Monitoring
- ⊙ Superb Safety & Reliability
- ⊙ Friendly & Thoughtful Design
- ⊙ High Power Generation for High Returns

[+ info](#)

Model	Maximum Efficiency	Nominal Power	MPPT	Protection
GW50KS-MT	98.6%	50 kW	5	IP65
GW60KS-MT		60 kW	6	

HT Series

100-136kW | Up to 12 MPPTs | Three Phase



- ⊙ String Level Monitoring
- ⊙ Dynamic power export limit
- ⊙ IP66 and C5 protection
- ⊙ Optional Type I Surge Protection & AFCI
- ⊙ Full load running at 45°C
- ⊙ Up to 12 MPPTs
- ⊙ Easy and quick configuration via Bluetooth
- ⊙ Power line communication

[+ info](#)

Model	Max. AC Active Power (kW)	Maximum Efficiency	Nominal Output Power (kW)	MPPT	Protection
GW100K-HT	110	98.6%	100	10	IP66
GW110K-HT	121		110	12	
GW120K-HT	132		120		

HT Series

225/250kW | Three phase | 6/12 MPPTs



- ⊙ String level monitoring
- ⊙ Real-time monitoring
- ⊙ Smart string protection switch
- ⊙ Type II SPD for both DC and AC
- ⊙ AC terminal ready for 300mm² aluminum cables
- ⊙ Reactive power compensation at night
- ⊙ 20A max. current per string
- ⊙ Anti-PID function

[+ info](#)

Model	Max. AC Active Power (kW)	Maximum Efficiency	Nominal Output Power (kW)	MPPT	Protection
GW225K-HT	247.5	99.0%	225	12	IP66
GW250K-HT	250		250		
GW225KN-HT	247.5		225	6	
GW250KN-HT	250		250		

ET Plus + Series

5-10kW | Three Phase | Hybrid Inverter



- ⊙ Smart load control
- ⊙ 150% DC input oversizing
- ⊙ 100% unbalanced output
- ⊙ In-built Type II SPD for DC
- ⊙ Battery ready option
- ⊙ <10ms UPS-level switching

[+ info](#)

Model	Max. Input Power (W)	Maximum Efficiency	Nominal Power	MPPT	Protection
GW5K-ET	7500	98.0%	5000	2	IP66
GW6.5K-ET	9700		6500		
GW8K-ET	12000	98.2%	8000		
GW10K-ET	15000		10000		

ET PLUS+ Series16A

5-10kW | Three Phase | Hybrid Inverter

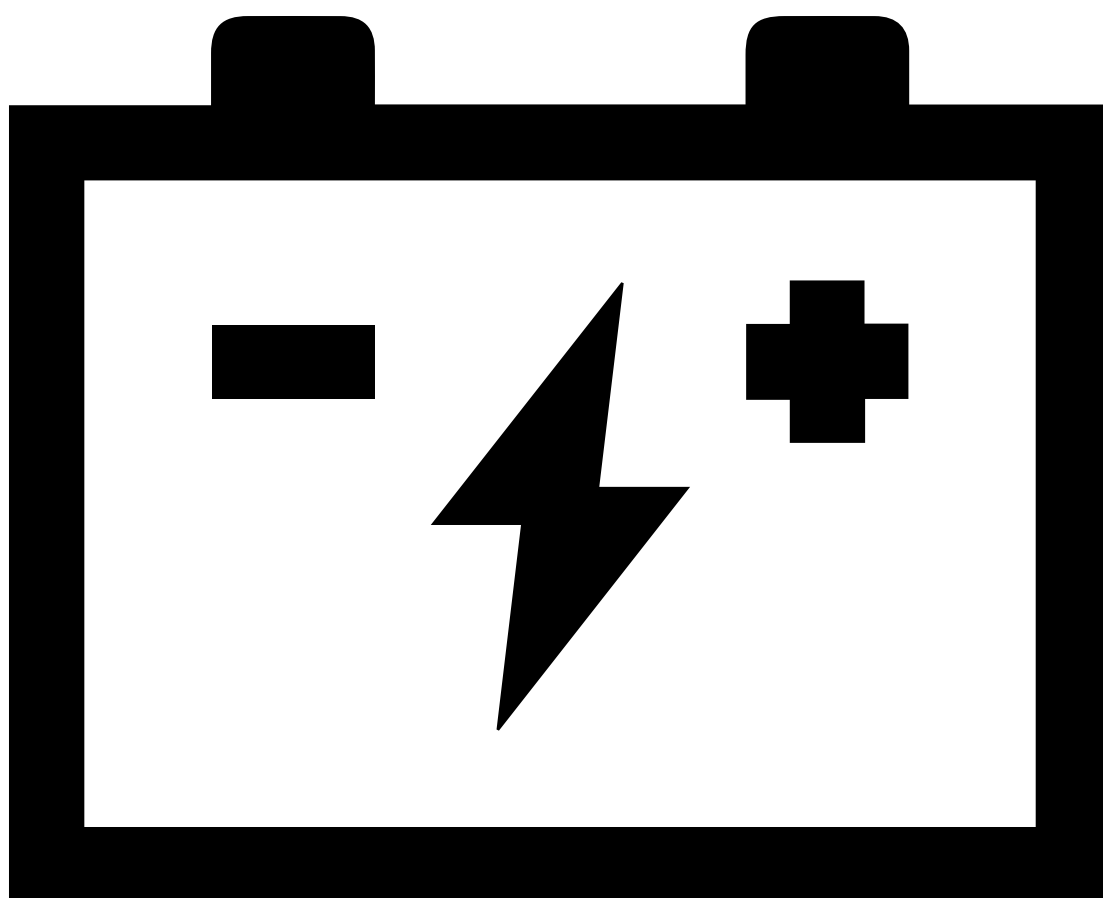


- ⊙ Smart load control
- ⊙ Peak shaving
- ⊙ In-built Type II SPD on DC side
- ⊙ IP66 ingress protection
- ⊙ Fanless cooling for quiet operation
- ⊙ Elegant and compact design
- ⊙ Battery ready option
- ⊙ Maximum 16A DC input current per string

[+ info](#)

Model	Max. Input Power (W)	Maximum Efficiency	Nominal Power	MPPT	Protection
GW5KN-ET	7500	98.0%	5000	2	IP66
GW6.5KN-ET	9700		6500		
GW8KN-ET	12000	98.2%	8000		
GW10KN-ET	15000		10000		





Batteries



+ video

Company

Huawei, a leading global ICT and network energy solutions provider, serves more than one-third of the world's population. We have nearly 188,000 employees, and we operate in more than 170 countries and regions, serving more than three billion people around the world. With over CNY480 billion invested into R&D over the past decade, Huawei continues to innovate based on customer needs and are committed to enhancing customer experience and delivering maximum value.

FusionSolar

With an established presence in solar markets worldwide, Huawei provides new generation string inverters with smart management technology to create a fully digitalized Smart PV Solution – FusionSolar®. FusionSolar® is smart, safe and reliable whilst consistently delivering high yields and ROI, making Huawei the preferred choice for investors and developers worldwide. Huawei has been ranked as No.1 in the world for global inverter shipments from 2015 to 2018.



Smart String Battery

LUNA2000-5/10/15-S0



More Usable Energy



Flexible Investment



Safe & Reliable



Easy Installation



Quick Commissioning



Perfect Compatibility

[+ info](#)

Model	Max. output power	Dimension	Weight	Protection
LUNA2000-5-S0	2.5 kW	670 x 150 x 600 mm	63.8 kg	IP55
LUNA2000-10-S0	5 kW	670 x 150 x 960 mm	113.8 kg	
LUNA2000-15-S0	5 kW	670 x 150 x 1320 mm	163.8 kg	

Company

GoodWe is a leading, strategically-thinking enterprise which focuses on research and manufacturing of PV inverters and energy storage solutions. With an average monthly sales volume of 30,000 pieces in 2019 and 12 GW installed in more than 100 countries, GoodWe solar inverters have been largely used in residential rooftops, commercial systems and energy storage systems. GoodWe ranked as World Top 10 solar inverter manufacturer by Bloomberg, IHS & Wood Mackenzie. GoodWe benchmarks its success on the success achieved by its customers by identifying and integrating the most advanced components and techniques available while offering an unparalleled after-sales service.

GoodWe has set up an integrated service system for pre-sale, in-sale and after-sale and has established service centers worldwide. The company has developed a concept of workshops which aim to offer global support to all customers including project consulting, technical training, onsite support and after-sales service.

As a stable, bankable company, GoodWe has built its corporate reputation by achieving sustainable growth in every market it operates in. A prudent, step-by-step approach of strategic growth and consolidation offers longevity, profitable growth and increased market share; a business model also adopted by some of the world's leading renewable companies.

Mission

To provide seamless and hassle-free products and solutions.

Vision

The impact of coal-fired power plants pose a huge threat to our environment and public health. As an advocate for a greener environment, it is our responsibility to provide a more sustainable future for the new generations to come.



GoodWe

Lynx Home U Series - Low Voltage



- ⊙ **Safe & Reliable**
- ⊙ **Independent Operation in Parallel**
- ⊙ **Install Anywhere Anyhow**
- ⊙ **Great User Experience**

[+ info](#)

Model	Max. Charge Current	Dimension	Weight	Protection
LX U5.4-L	50A	505 x 175 x 570 mm (LX U5.4-L)	57 kg	IP65 (Outdoor / Indoor)
2*LX U5.4-L	100A		114 kg	
3*LX U5.4-L			171 kg	
4*LX U5.4-L			228 kg	
5*LX U5.4-L			285 kg	
6*LX U5.4-L			342 kg	

GoodWe

Lynx Home S Series



- ⊙ **Charge Your Battery within ONE HOUR**
- ⊙ **Auto Under-voltage Reboot**
- ⊙ **Remote Diagnosis & Upgrade**
- ⊙ **IP65 Protection Level**

[+ info](#)

Model	Max. Charge Current	Dimension	Weight	Protection
LX S7.5-H	50A (1C)	610 x 226 x 1170 mm	126 kg	IP65 (Outdoor / Indoor)
LX S10-H		610 x 226 x 1445 mm	163 kg	
LX S13-H		1220 x 226 x 1170 mm	200 kg	
LX S15-H		1220 x 226 x 1170 mm	237 kg	
LX S18-H		1220 x 226 x 1445 mm	274 kg	
LX S20-H		1220 x 226 x 1445 mm	311 kg	

Energizer[®]

HardCase

PROFESSIONAL

Anywhere. Anytime.

The Energizer HardCase Professional range of portable power stations are built to last. Whether you're on-site or in the field, you can rely on Energizer for safe, durable power.

Energizer HardCase Professional range of portable power stations can be used anywhere, anytime.



Energizer - Portable Power

Everest PPS 100



[+ info](#)

Model	Capacity	USB-A Port	USB-C Port	Dimensions	Weight
Everest PPS 100	108 Wh (3.6V/30000 mAh)	2 x 5V/2.4A Output Port	1 x 5V-20V / 60W Max, Input/Output Port	83 x 83 x 210 mm	1.08 kg

Energizer - Portable Power

Everest 300



- ⦿ Lightweight and durable
- ⦿ Hours of extended battery life for your devices
- ⦿ Multiple outputs to power just about anything
- ⦿ Long lasting and ultra safe Lithium Ion batteries
- ⦿ Splash and dustproof protective housing






[+ info](#)

Model	Capacity	USB-A Port	USB-C Port	Dimensions	Weight
Everest 300	289 Wh (3.7V/78000 mAh)	5V/3.1A	1 x 5V-12V/3.0A 18W Max 1 x 5V-20V/3.0A 45W Max	260 x 210 x 140 mm	4 kg

Energizer - Portable Power

Everest 500



-  TOUGH & DURABLE
-  ADVANCED BATTERY MANAGEMENT
-  CHARGE VIA SOLAR PANEL
-  MULTI -FUNCTION LCD SCREEN & FLASHLIGHT
-  AC OUTLET

[+ info](#)

Model	Capacity	USB-A Port	USB-C Port	Dimensions	Weight
Everest 500	515Wh (34.8Ah,14.8V)	USB 1: QC 3.0, 18W, USB 2: 5V 2.4A, USB 3: 5V 2.4A, USB 4: 5V 2.4A	PD 60W (5V 3A/9V 3A /12V 3A/15V 3A/ 20V 3A)	260 x 172 x 171 mm	5.6 kg

Energizer - Portable Power

Everest 1100



TOUGH & DURABLE



ADVANCED BATTERY MANAGEMENT



CHARGE VIA SOLAR PANEL



9 LAYERS OF SAFETY PROTECTION



2X AC OUTLET

[+ info](#)

Model	Capacity	USB-A Port	USB-C Port	Dimensions	Weight
Everest 1100	1166Wh (21.6V/54,000mAh)	USB 1: QC 3.0, 18W, USB2: QC 3.0, 18W, USB 3: 5V 2.4A, USB 4: 5V 2.4A	USB-C 1 , PD 100W : 5V 3A/9V 3A/12V 3A/15V 3A/20V 5A, USB-C 2, PD 27W : 5V 3A/9V 3A/12V 2.25A	340 x 235 x 206 mm	11 kg

Energizer - Foldable Panels

SUNPACK 80W



- ⦿ Monocrystalline panel technology
- ⦿ Patented LCD Display
- ⦿ Provides clean and renewable electricity supply with 3-way charging options for Li-ion generators
- ⦿ Powered by USB or USB-C ports

[+ info](#)

Model	Peak Power	Cell efficiency	Warranty	Dimensions (unfolded)	Weight
SUNPACK 80W	80W	23%	24 months	1185 x 525 x 7 mm	3 kg

Energizer - Foldable Panels

SUNPACK 120W



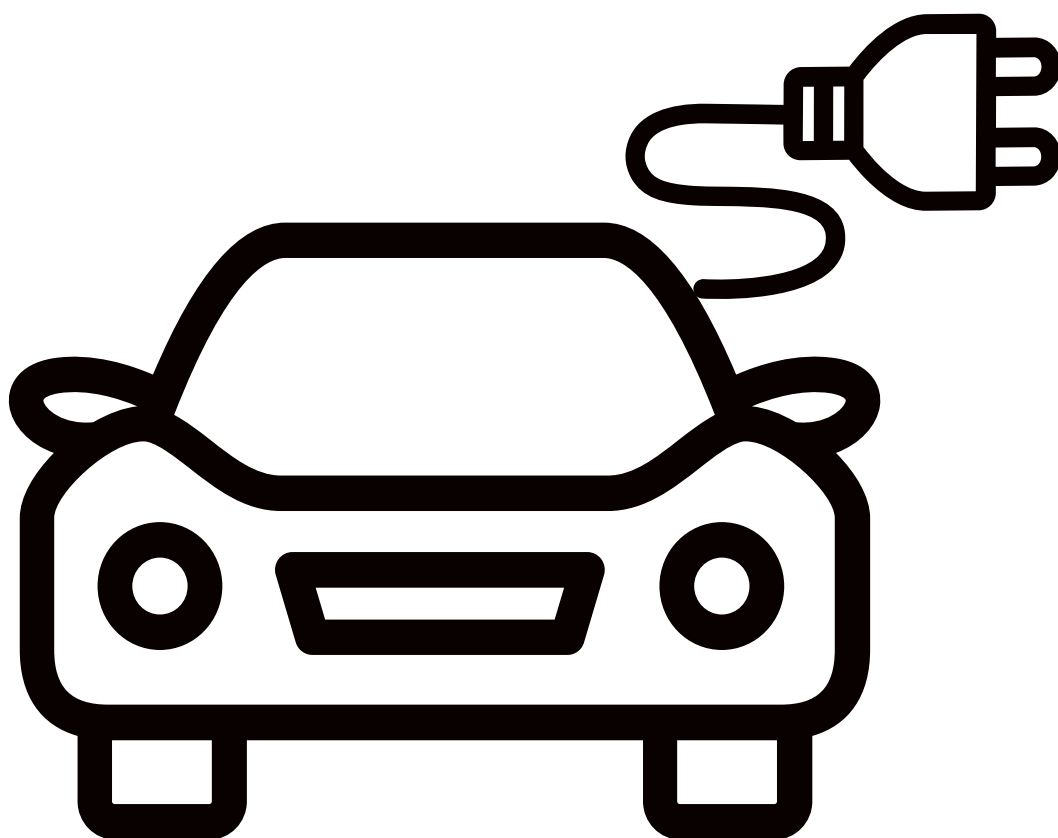
- ⦿ Monocrystalline panel technology
- ⦿ Patented LCD Display
- ⦿ Provides clean and renewable electricity supply with 3-way charging options for Li-ion generators
- ⦿ Powered by USB or USB-C ports

[+ info](#)

Model	Peak Power	Cell efficiency	Warranty	Dimensions (unfolded)	Weight
SUNPACK 120W	120W	23%	24 months	1612 x 530 x 7 mm	5.2 kg



Go cleaner, Go electric!



E-mobility



+ video

Company

Huawei, a leading global ICT and network energy solutions provider, serves more than one-third of the world's population. We have nearly 188,000 employees, and we operate in more than 170 countries and regions, serving more than three billion people around the world. With over CNY480 billion invested into R&D over the past decade, Huawei continues to innovate based on customer needs and are committed to enhancing customer experience and delivering maximum value.

FusionSolar

With an established presence in solar markets worldwide, Huawei provides new generation string inverters with smart management technology to create a fully digitalized Smart PV Solution – FusionSolar®. FusionSolar® is smart, safe and reliable whilst consistently delivering high yields and ROI, making Huawei the preferred choice for investors and developers worldwide. Huawei has been ranked as No.1 in the world for global inverter shipments from 2015 to 2018.



Ev Charger

NEW



PV Power Preferred

Power Your Car Completely with Solar

Make EV Even Greener



Automatic Phase Switch

Automatic Switch between 1 Phase and 3 Phase

More Usable Green Power



All on a Single App

Full Control Through One App

Cable E-Lock for Anti-theft



Dynamic Charging Power

Automatic Detection and Adjustment

No Worry about Overload



3 - Step Installation

Fast Installation in 16 Minutes

Wiring-free Maintenance



Auto - Authentication

Bluetooth Auto - authentication Before Charging

+ info

Model	Charge power (configurable) 1.	Dimension	Weight
AP07NEU	1.4 kW to 7.4 kW	335 mm x 180 mm x 145 mm	3 kg
AP022NEU	1.4 kW 4 to 22 kW		3.1 kg

Company

Established in 2010, GoodWe is a world-leading PV inverter and energy storage solutions provider, with the research and manufacturing of PV inverters and energy storage solutions at its core.

GoodWe is listed as a public limited company on the Shanghai Stock Exchange (Stock Code: 688390), with a long-standing strong presence in the solar market. GoodWe PV inverters have seen an accumulative installation of 35 GW in more than 100 countries in residential and commercial rooftops, industrial and utility scale systems and range from 0.7kW to 250kW. GoodWe has more than 4,000 employees situated in over 20 different countries and is regarded as the Global Top 3 storage inverter supplier by Wood Mackenzie in 2021.

GoodWe's financial stability has landed it the highest Altman-Z score among PV manufacturers on BloombergNEF's 2021 report, displaying its strong financial health and bankability, and until today is the sole inverter brand that has won the TÜV Rheinland All Quality Award for 7 consecutive years (2015-2021). In 2022 GoodWe was awarded the Silver Medal by EcoVadis, placing the company in the top 14% of 100,000+ companies across 175 countries: a firm statement of the company's commitment to a sustainable, smart energy future.

DRIVING THE WORLD'S SMART ENERGY FUTURE

In numbers:

- 4.000+ employees.
- 700+ employees working in R&D.
- 35 GW installed globally.



EV Charger Series

COMING SOON



Smart charging management



Compatible with all EV brands



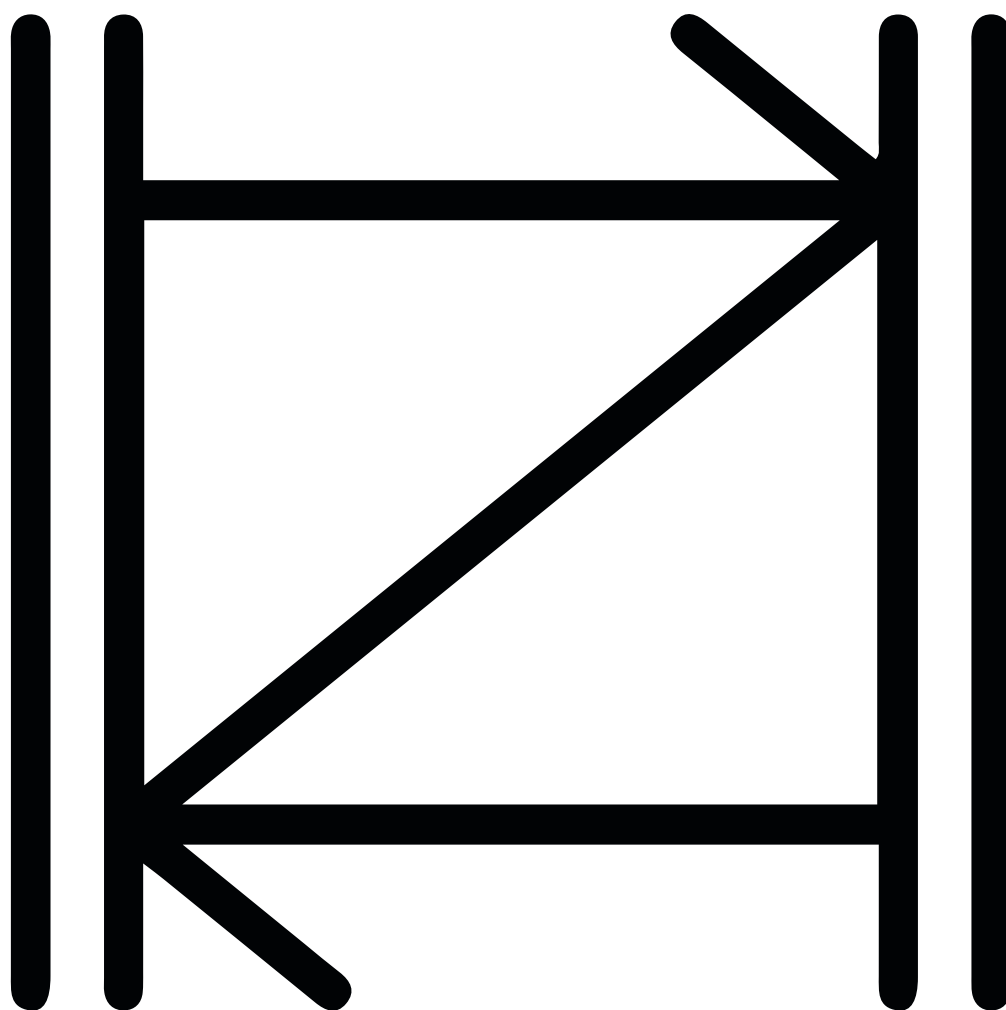
Charging cable included

[+ info](#)

Model	Input Voltage (Vac)	Output Power (W)	Dimension	Weight
GW7K-HCA	230Vac, L/N/PE	7000	256 x 603 x 170 mm	<7kg
GW11K-HCA	400Vac, 3L/N/PE	11000		<7 kg
GW22K-HCA	400Vac, 3L/N/PE	22000		<10 kg

Today's **resource** for a
brighter **tomorrow!**





Mounting Systems



+ video

Company

As a roof-mounting specialist, K2 systems focus on developing and optimising innovative mounting systems, while always keeping the feet on the ground. Through constant exchange with the customers, K2 can offer practical, long-lasting and secure solutions.

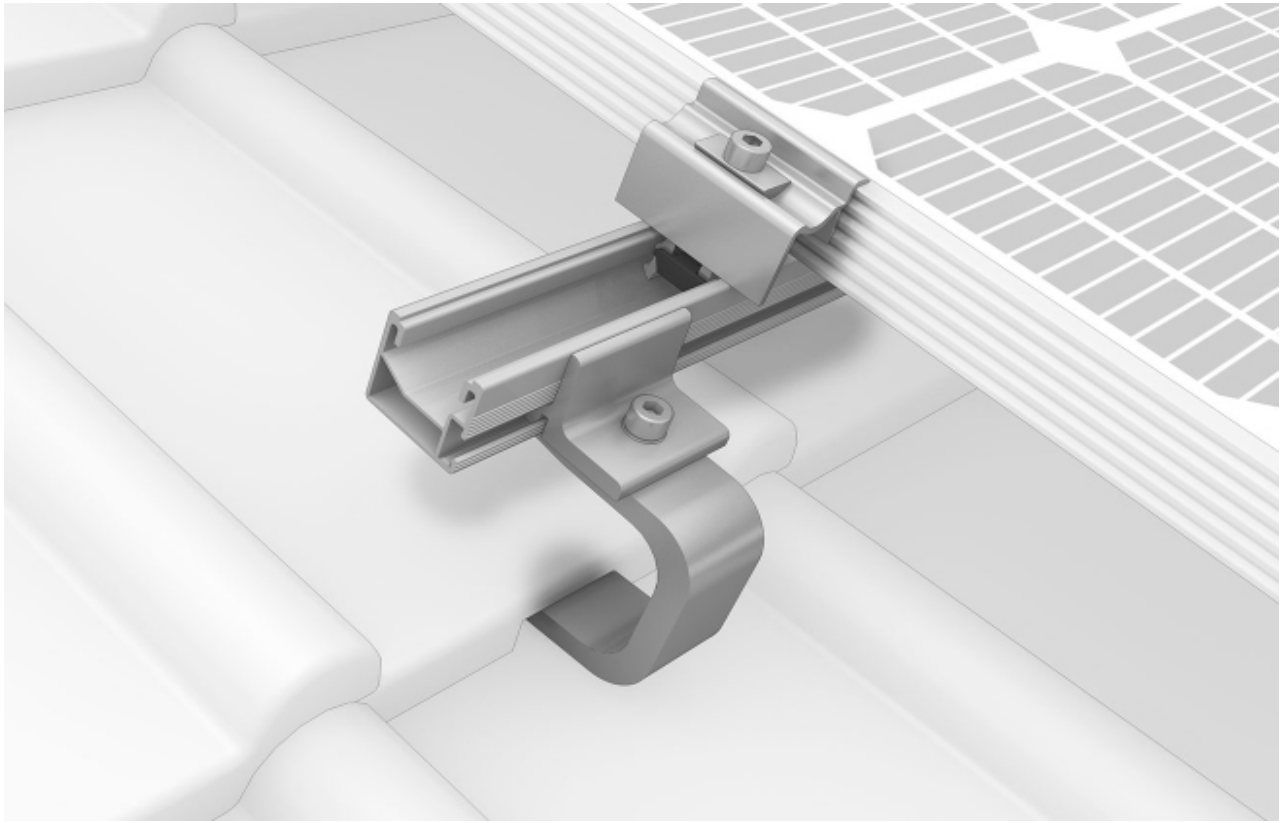
Philosophy

"We all have a responsibility to preserve the Earth as a liveable planet for future generations. K2 Systems has the know-how, the power, and the team to decisively advance the energy transition with the help of solar power. And above all: we have the will to tackle things today - and not put them off until tomorrow."



PITCHED ROOFS

SingleRail System



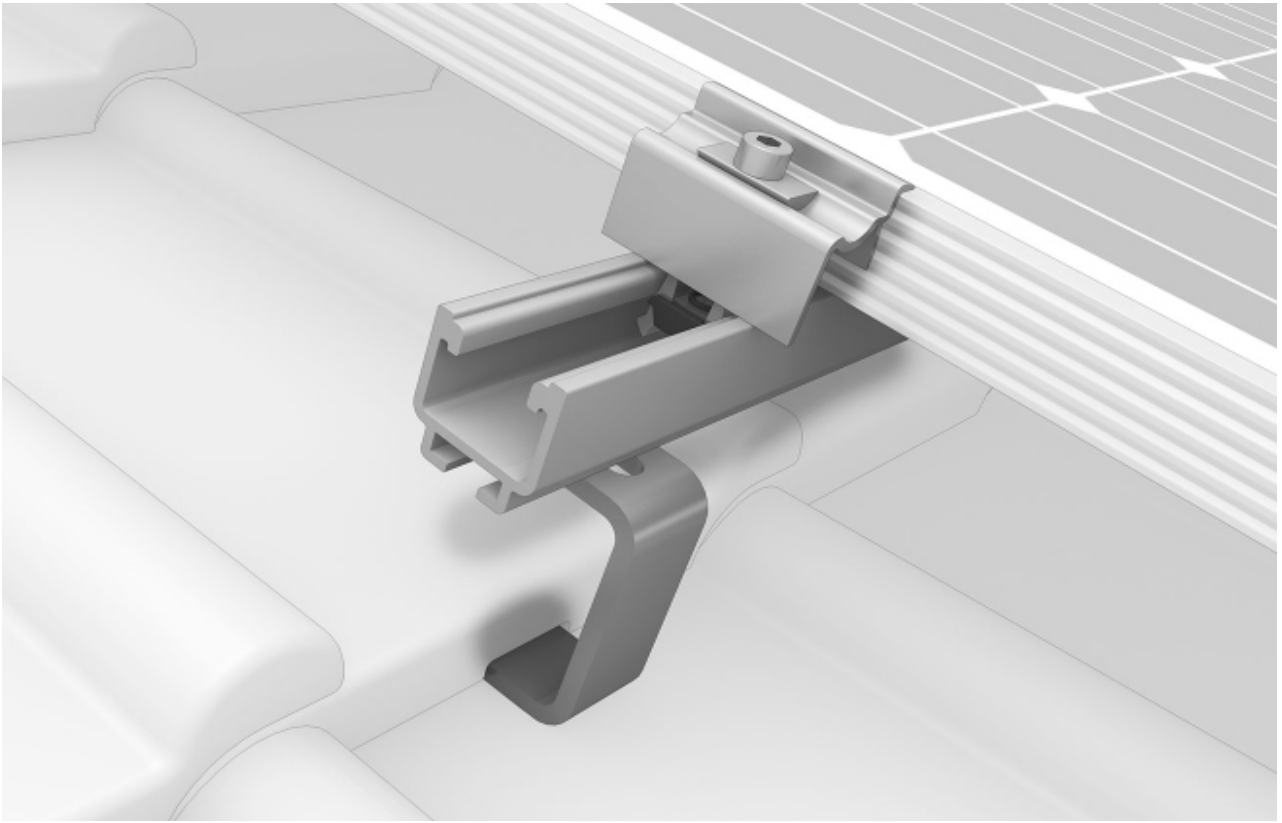
[Installation video](#)
[+ info](#)

Quick and low-cost with direct lateral connections to the rail including customised height adjustment.

The SingleRail mounting system for photovoltaic assemblies is suitable for roofing with pan tiles and corrugated fibre cement or corrugated sheet metal. The roof fastening is done using roof hooks or hanger bolts.

PITCHED ROOFS

SolidRail System



[Installation video](#)
[+ info](#)

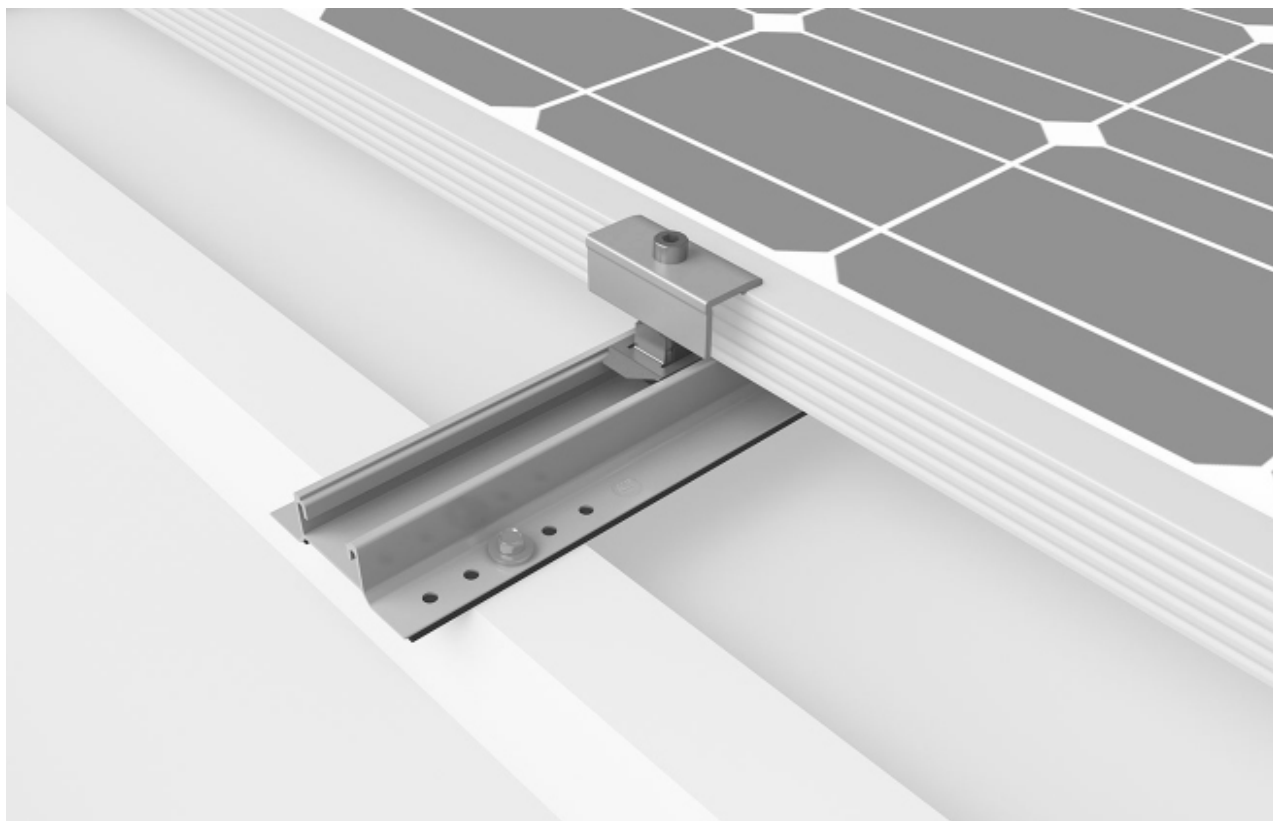
Suitable for different load cases and many ranges of spans inclusive extensive range of rails.

The SolidRail mounting system for photovoltaic assemblies is suitable for nearly all coverings. This includes pan tiles, plain tiles, slate tiles, trapezoidal sheet metal, corrugated fibre cement, corrugated sheet metal and standing seam roof.

- Comprehensive range of mounting rails for varying load profiles
- Robust, structurally proven
- High flexibility for a diverse range of widths

PITCHED ROOFS

NEW - MiniRail MK2 System



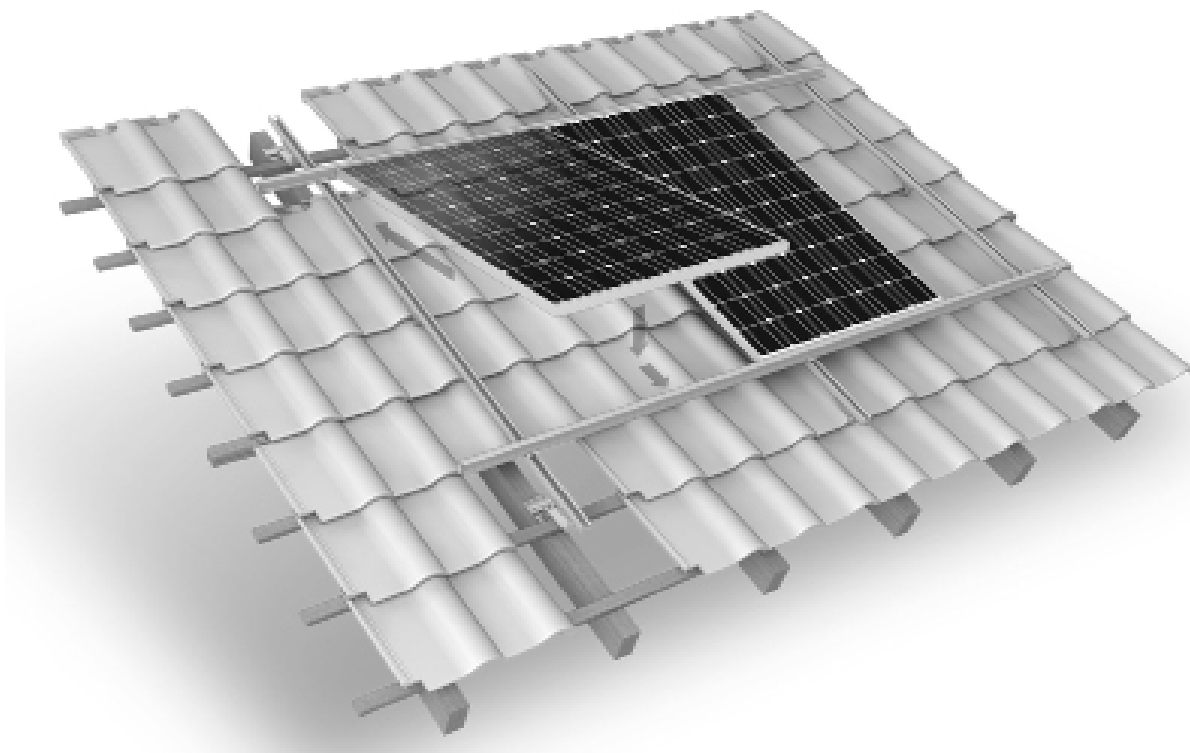
[Installation video](#)
[+ info](#)

MiniRail with MK2 rail channel - High flexibility and a wide range of applications on the roof are created. The new MK2 rail channel eliminates the need for a separate, dedicated module clamp and improves the connection of the optimisers and the elevation with RailUp.

- Innovative and statically optimised short rail system that is quick and easy to mount
- Universal module clamps and suitable for portrait and landscape orientation
- High planning reliability, optimised for storage and transport
- 5° elevation with MiniFive: significantly more output thanks to improved ventilation and optimised solar irradiation

PITCHED ROOFS

InsertionRail System



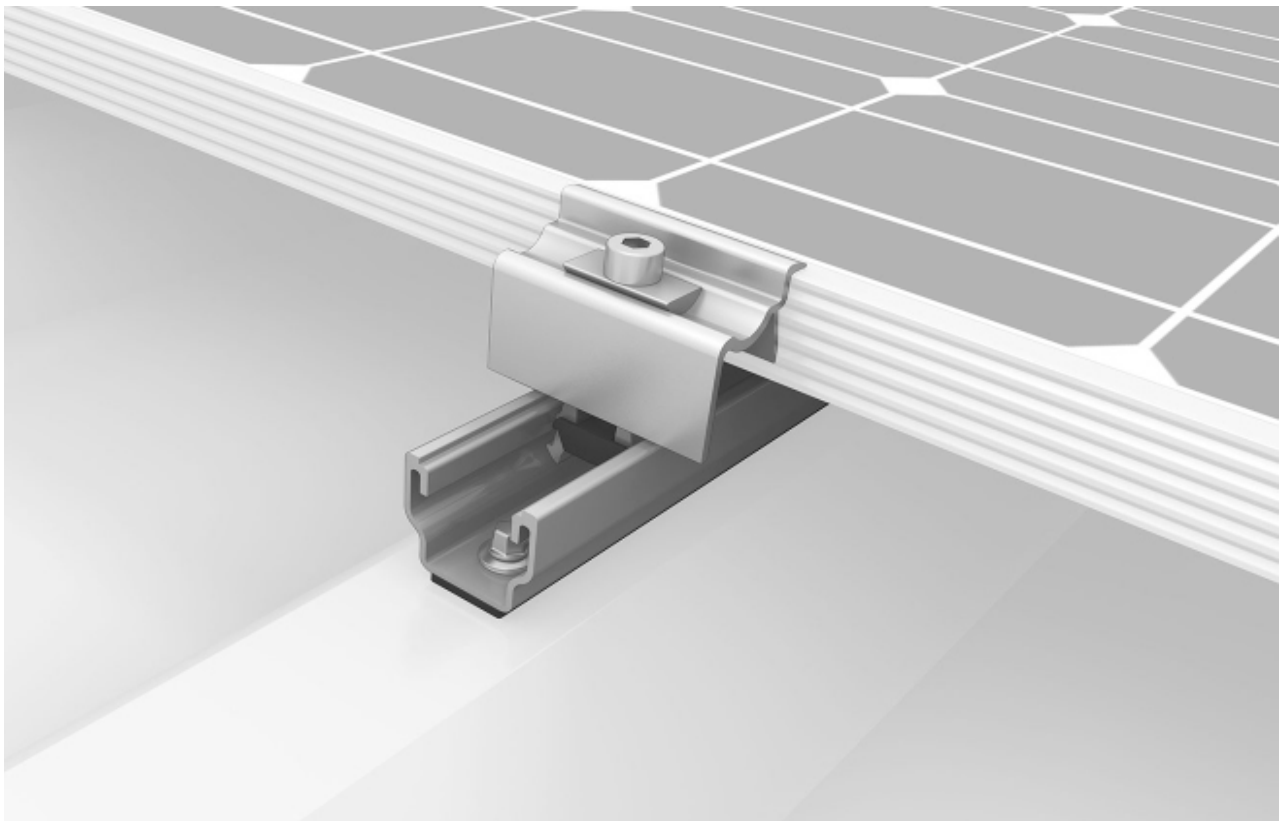
[Installation video](#)
[+ info](#)

Sleek design with continuous closed surface adds further robustness.

- It is suitable for roofing with pantiles, corrugated fibre cement or corrugated sheet metal and is fixed with roof hooks or hanger bolts.
- Sleek design with continuous closed surface adds further robustness
- Insertion profile provides additional frame reinforcement
- Without having to apply clamps eliminates the need for assistance ensuring lightning-fast installation
- Module wiring quick and easy

PITCHED ROOFS

MultiRail System



[Installation video](#)
[+ info](#)

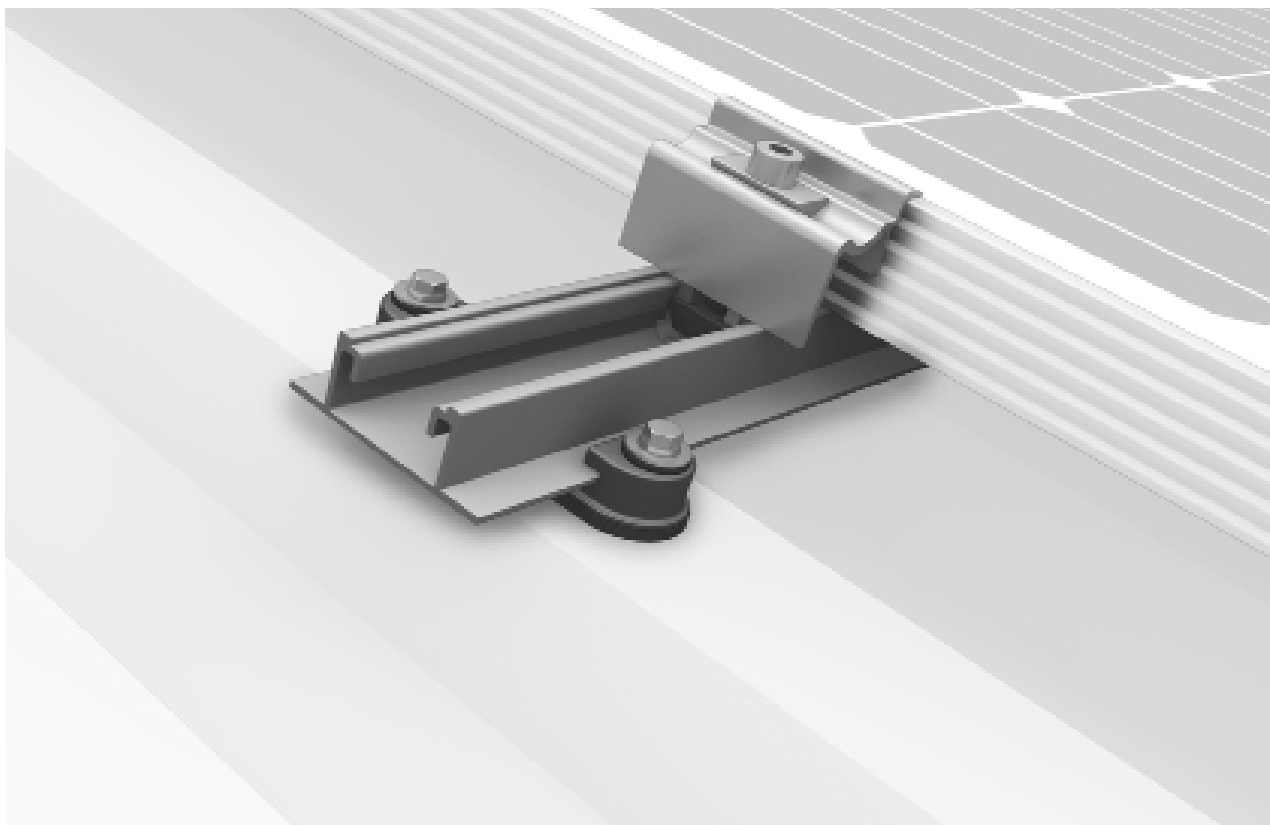
Roof connection and module riling in one single component. Short rail or a flexible component in various lengths available.

The MultiRail mounting system for photovoltaic assemblies is suitable for trapezoidal and corrugated sheet metal roofs. It blends roof connection with module riling in one single component.

- Easy and proven – as a short rail or a flexible component in various lengths
- Quick planning with less material and greater effectiveness
- Solid base rail for trapezoidal elevation with Dome 6

PITCHED ROOFS

SpeedRail System



[Installation video](#)

[+ info](#)

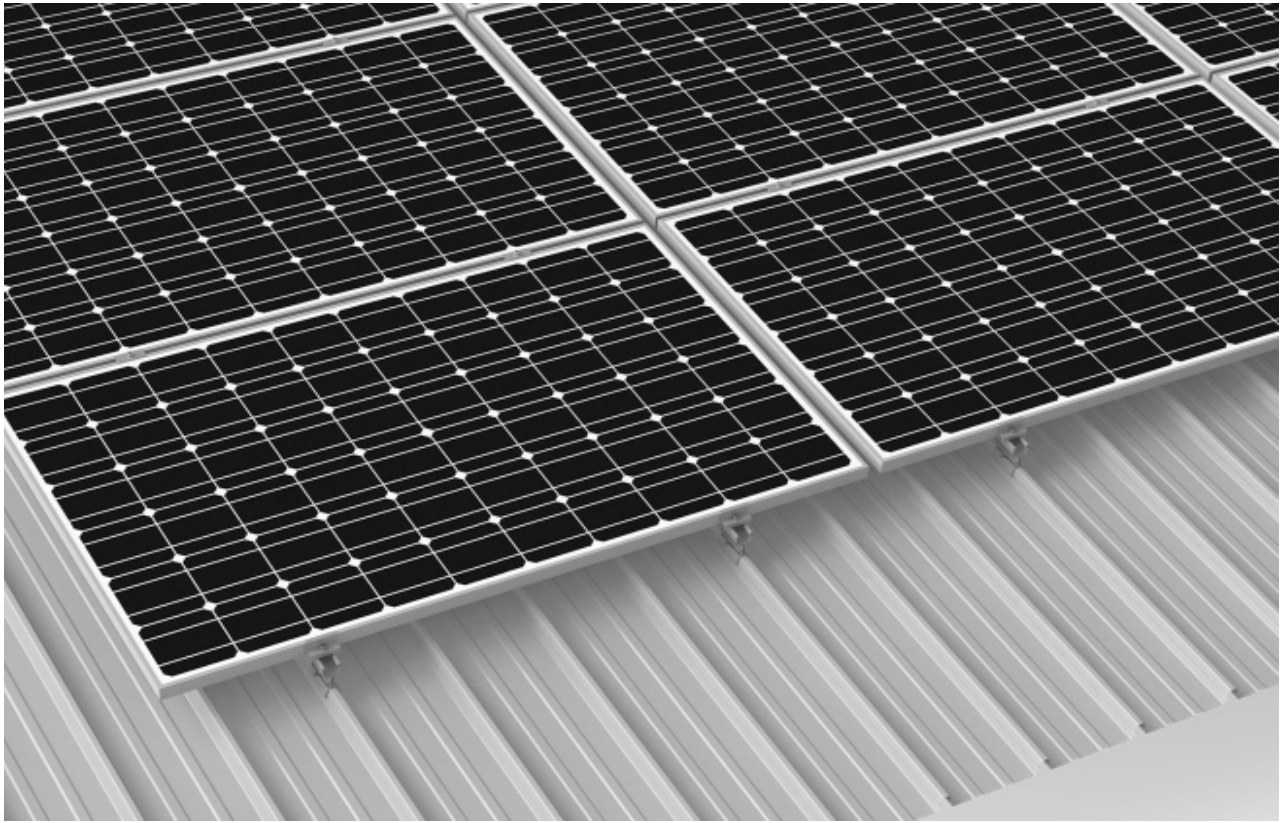
All-rounder with only 4 installation steps. Floating with controlled thermal linear expansion.

The SpeedRail mounting system for photovoltaic systems has been specially developed for trapezoidal sheet metal roofs. In Germany, the system has an abZ certification.

- The proven long rail system for trapezoidal sheet metal applications as well as floating with controlled thermal linear expansion.
- Our best-selling system - over 2 GW installed worldwide
- All-rounder with only 4 installation steps - also suitable for high load

PITCHED ROOFS

Universal KL-Clamp System



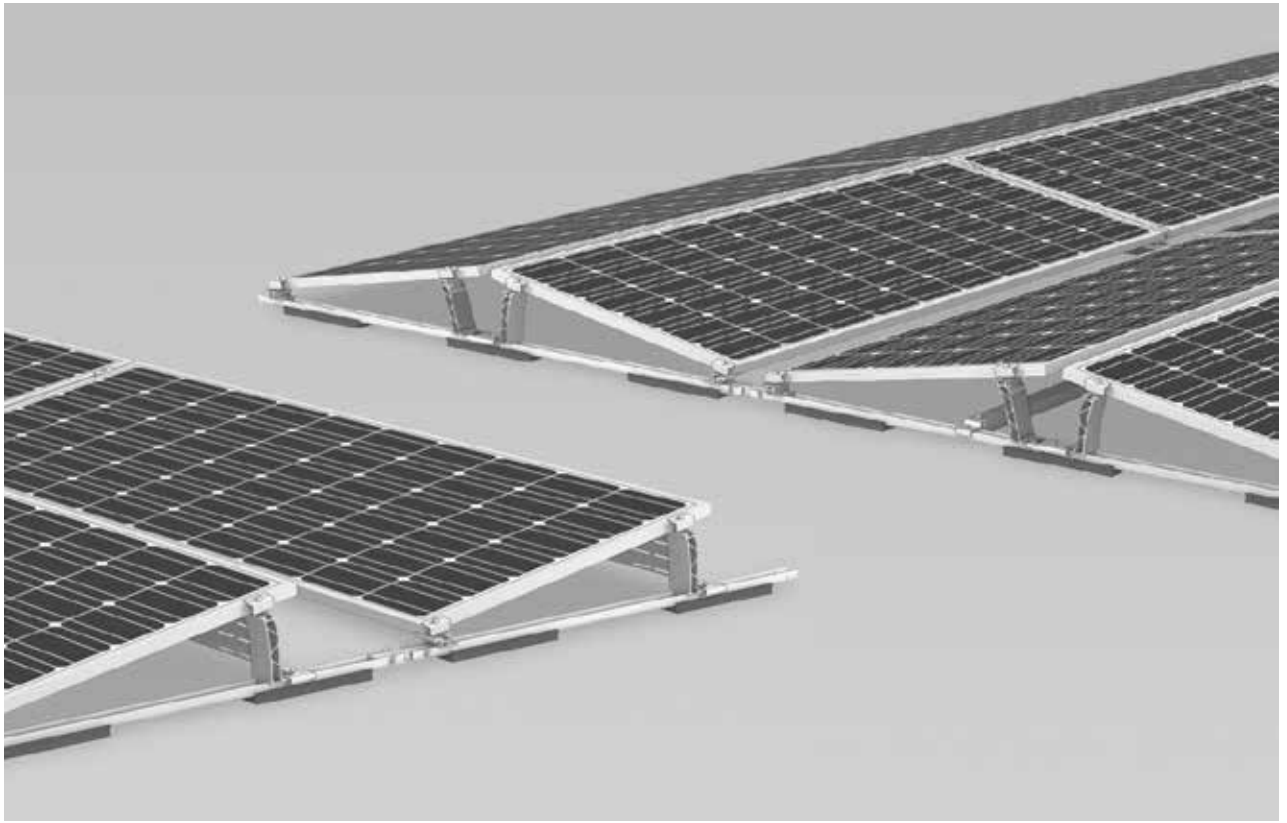
[Installation video](#)
[+ info](#)

Ultra-quick assembly solution for roofing types Klip-Lok® and Klip-Tite® with universal module clamp.

- Ultra-quick assembly solution for roofing types Klip-Lok® and Klip-Tite®
- Rail-less landscape assembly with one module-bearing clamp
- Comfortable portrait assembly with SingleRail
- Also possible for wider roof profile ribs

FLAT ROOFS

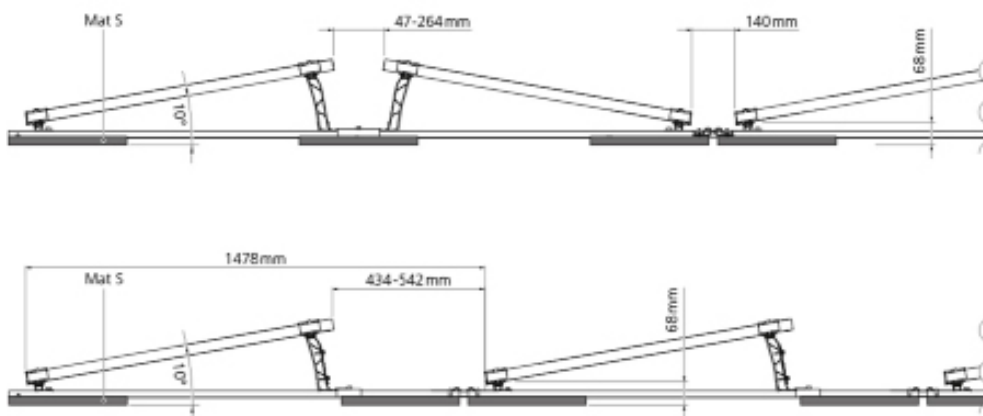
Dome 6 System



[Installation video](#)
[+ info](#)

Solutions for all roof coverings. Clearly ballast-optimised system based on the latest wind tunnel standards.

- Flat roof all-rounder - solutions for all roof coverings
- Clearly ballast-optimised system based on the latest wind tunnel standards
- Secure anchoring with fixed connection for roofs $< 10^\circ$ and low load reserves
- Component-optimised system



FLAT ROOFS

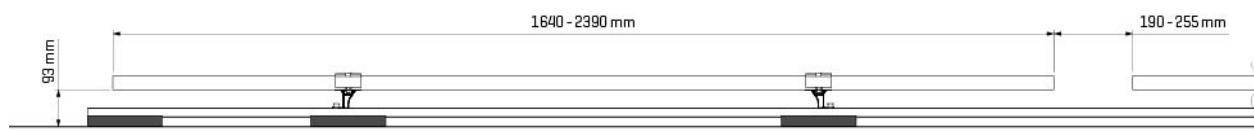
Dome Zero System



[Installation video](#)
[+ info](#)

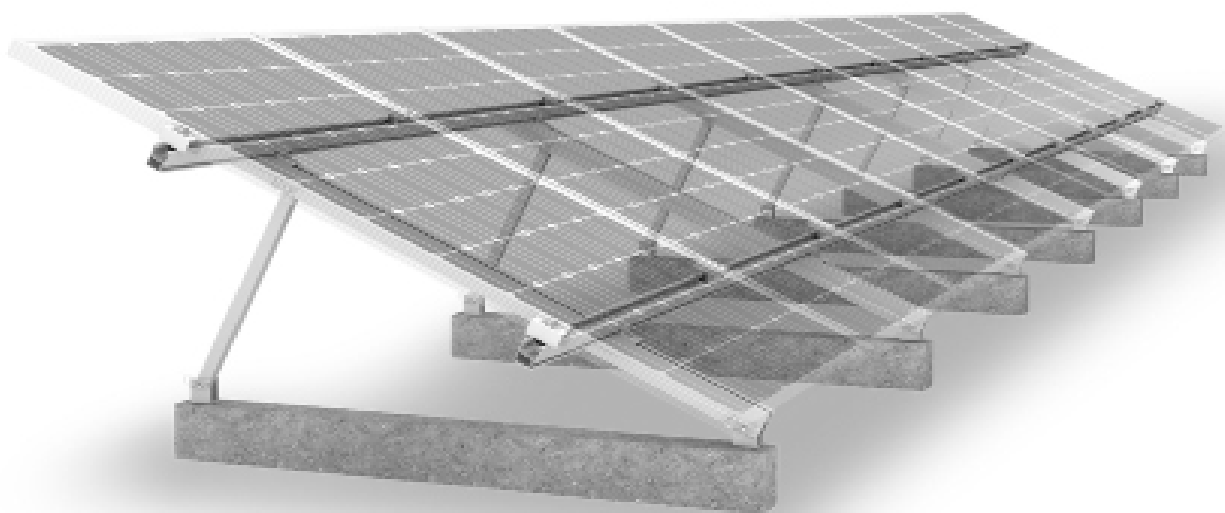
Roof-parallel mounting system suitable for roof pitches up to 10° with typical flat roof coverings.

- Roof parallel mounting system for flat roofs with Dome 6 components
- Suitable for roof pitches up to 10° with typical flat roof coverings
- Placement in portrait orientation of the modules
- Very flat construction height – can be hidden behind a parapet



FLAT ROOFS

TiltUp Vento System



[Installation video](#)
[+ info](#)

3 different elevation angles

- All module arrangements in 3 elevation angles available: 20°, 25° and 30°;
- Component connections identical throughout

Different module layouts

- Portrait/landscape possible;
- Clamping on the short or long side

Few components

- Refined system with well thought-out connections;
- Enables systemic storage and flexible application possibilities

Various roof connections

- Ballasted with concrete foundation: for almost every flat roof;
- Direct connection with concrete anchors possible

FLAT ROOFS

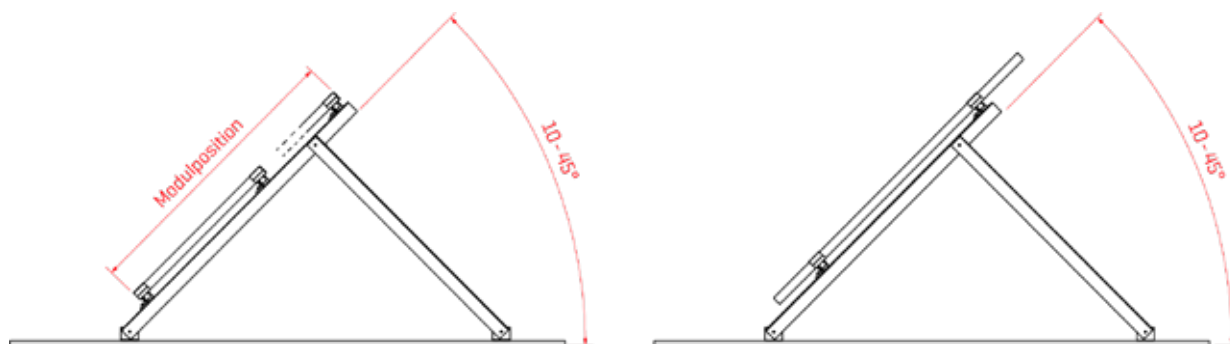
MultiAngle System



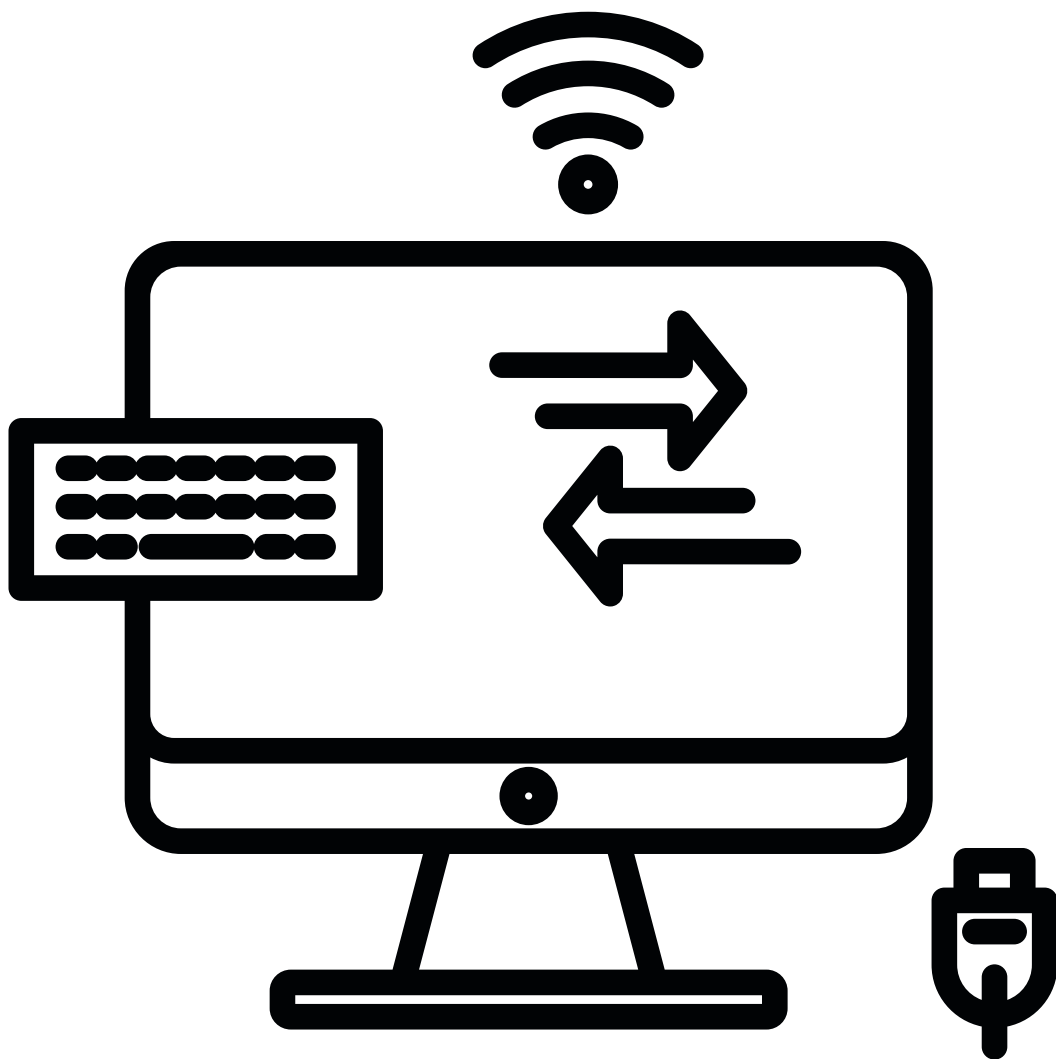
[Installation video](#)
[+ info](#)

High flexibility due to individually adjustable elevation angles and universal module orientation.

- High flexibility and individual solutions
- Suitable for almost all flat roofs
- Individually adjustable elevation angles
- Universal module orientation

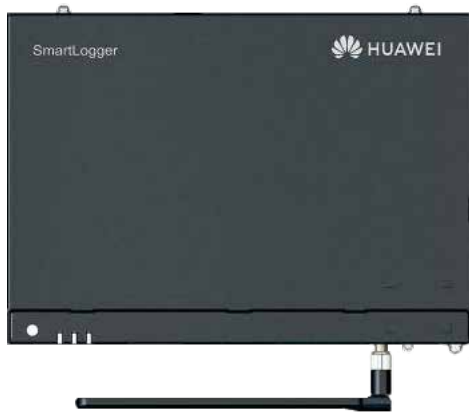






Monitoring Systems

SmartLogger 3000A



Smart
Smart zero export control design



Simple & Easy
Easy to install on site



Safe & Reliable
Safety by lightning protection module

+ info

Smart Power Sensor



Accurate
Class 1 measurement accuracy



Simple & Easy
LCD display, easy to set and check



Safe & Reliable
Overall power consumption ≤ 1 W

+ info

Smart Dongle



Smart
2G, 3G, 4G / WLAN communication
Support 3rd-party monitoring system



Simple
Plug & Play



Reliable
IP65 | Support auto reconnection

+ info



DTU-Lite-S



+ info

DTU-Pro






+ info

GOODWE

Smart Meter GM3000 / GM1000



GoodWe Smart Meter is designed with high precision small dimensions, convenient operation and installation. It is available for both single-phase and three-phase grid system connection to detect voltage, current, power and energy, for working with inverters including SEMS systems for the purpose energy management.

-  **Modular Design**
-  **Precise Data Collection**
-  **Easy Installation**

[+ info](#)

EzLogger Pro



EzLogger Pro is a self-developed monitoring device by GoodWe. In combination with a GoodWe solar inverter, it can easily read and record all key plant data and constantly transmit the data to the GoodWe portal via internet.

[+ info](#)

SEC1000 / SEC1000S

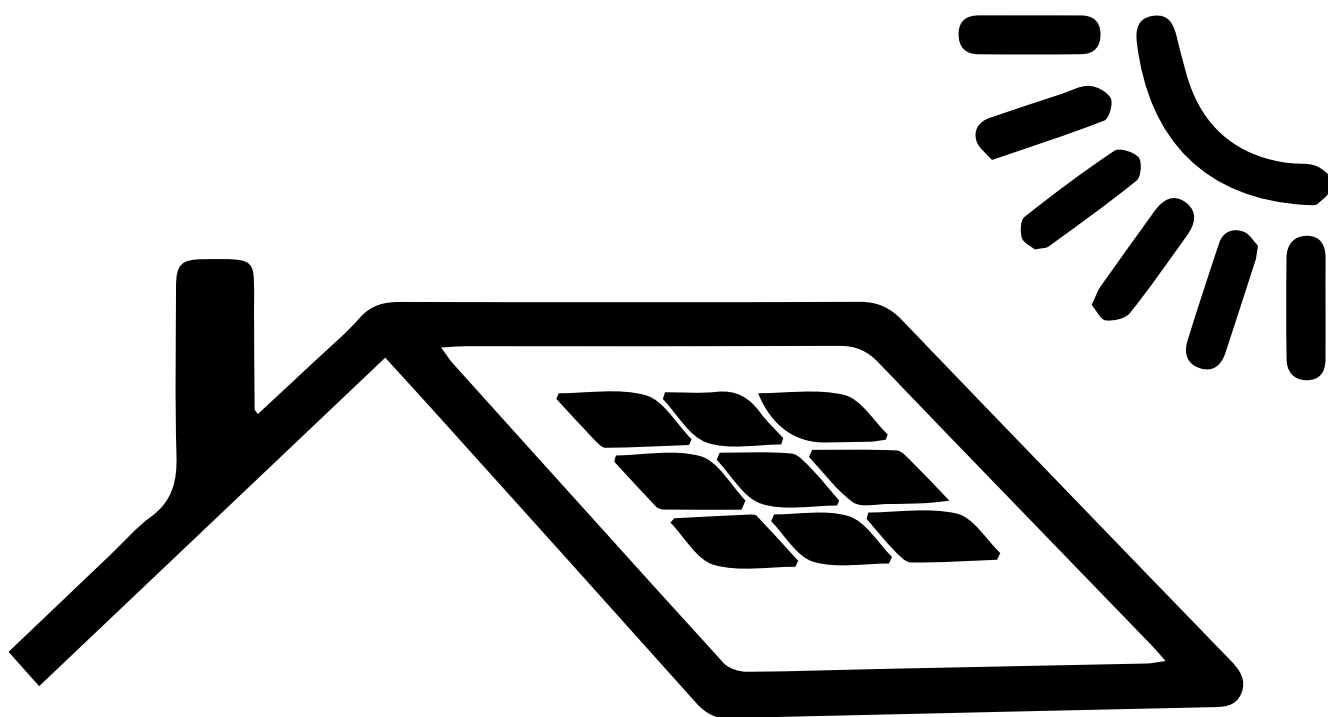


The SEC (Smart Energy Controller) is composed of GoodWe's three-phase meter and control board. It can be connected with SEMS to control and manage the performance of inverters in each string. SEC1000 is for monitoring, export power control and reactive power compensation, while SEC1000S is for export power control and ET Series inverter parallel control (up to 10 units). Small box, mighty functions!

[+ info](#)



Free and **Green**
energy from sun

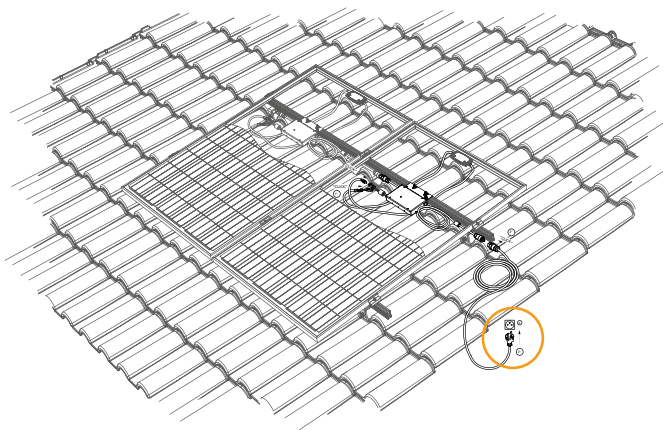


DYI Kits

solar ENERGYKIT

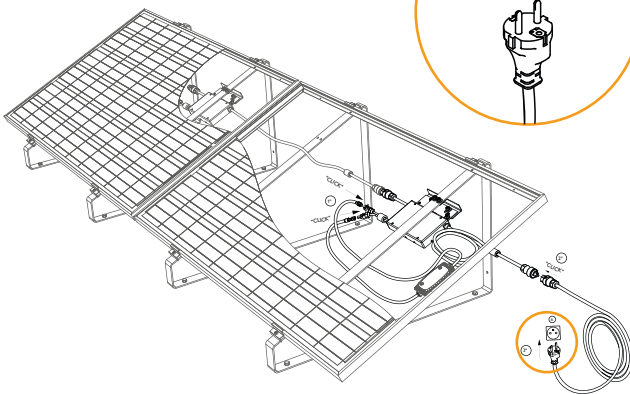
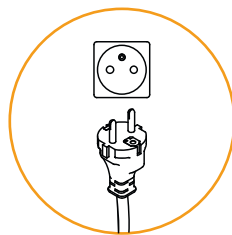
Power by **VOLTALIA**

Modular Solar Energy Kit - DIY



Advantages

- ⦿ Produce your own energy from an endless source, the SUN
- ⦿ Reduce your energy bill
- ⦿ Protect the environment by producing energy without CO2 emissions or other particles
- ⦿ Modular KIT expandable



(illustrative images)

What is included?

The SOLAR ENERGY KIT contains a photovoltaic system with all components needed to start immediately working:

- ⦿ 1 photovoltaic module
- ⦿ 1 micro inverter
- ⦿ 1 fixing structure
- ⦿ Cable and plugs for connection
- ⦿ Screws and accessories
- ⦿ 1 instruction manual for installation

Learn more at:

www.energy-kit.com



www.distributiongreece.voltaia.com



MPrime Solar Solutions S.A.
Zona Industrial, Apartado 36 - 3684-001 Oliveira de Frades, Portugal
+351 220 191 000 (Chamada para rede fixa nacional) | distribution.pt@voltaia.com



Voltaia S.A.
1340 rue de Pinville
34000 Montpellier, France
+33 4 85 44 02 09 | distribution.fr@voltaia.com



Voltaia Renovables España S.A.
Calle Princesa 17, 4º - 28008 Madrid, España
+34 914 258 459 | distribution.es@voltaia.com



Voltaia UK Ltd.
Unit 5-7, Headley Park 8, East,
Headley Road, Woodley, RG5 4SA
+44 20 39 94 10 94 | distribution.uk@voltaia.com



Voltaia S.A.
ATE - 340, Kifissias Avenue, 15451 Neo Psychiko Athens, Greece
+30 21 06 72 95 23 | distribution.gr@voltaia.com



Voltaia Italia SRL
Viale Montenero 32, 20135, Milano, Italy
+39 02 89 095 269 | distribution.it@voltaia.com

